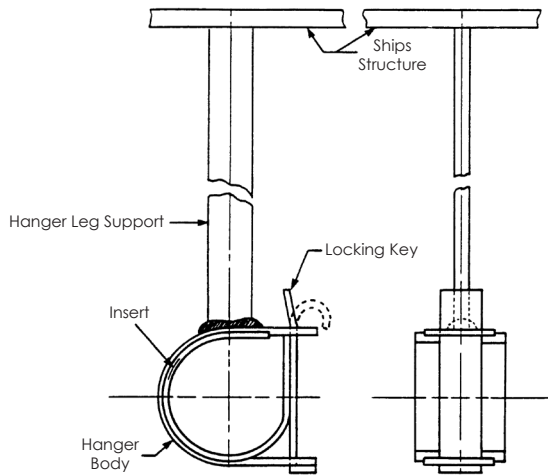


Pipe Hanger: "Key-Lock" Type

PIPE HANGER: "KEY-LOCK" TYPE



For 3/8" thru 4" IPS Pipe

Material Specifications

- Hanger Leg Support
- Hot Rolled Steel (M1015)
- Hanger Body
- Cold Rolled Steel (C1015-C1018)
- Locking Key
- Cold Rolled Steel (C1015-C1018)
- Insert
- Rubber (MIL-R-6855, CL2, 60 DURO)
- Finish
- Yellow Zinc Chromate (STD)
- Special finish to customer requirements also available

Pipe Hanger								
Assembly Number	Nominal (inches) IPS	Leg Support Length	Assembly Number	Nominal (inches) IPS	Leg Support Length	Assembly Number	Nominal (inches) IPS	Leg Support Length
1200-04	3/8"	4"	1203-04	1"	4"	1206-04	2"	4"
1200-08		8"	1203-08		8"	1206-08		8"
1200-12		12"	1203-12		12"	1206-12		12"
1200-16		16"	1203-16		16"	1206-16		16"
1200-18		18"	1203-18		18"	1206-18		18"
1201-04	1/2"	4"	1204-04	1 1/4"	4"	1207-04	2 1/2"	4"
1201-08		8"	1204-08		8"	1207-08		8"
1201-12		12"	1204-12		12"	1207-12		12"
1201-16		16"	1204-16		16"	1207-16		16"
1201-18		18"	1204-18		18"			
1202-04	3/4"	4"	1205-04	1 1/2"	4"	1208-04	3"	4"
1202-08		8"	1205-08		8"	1208-08		8"
1202-12		12"	1205-12		12"	1208-12		12"
1202-16		16"	1205-16		16"	1208-16		16"
1202-18		18"	1205-18		18"			
						1209-04	3 1/2"	4"
						1209-08		8"
						1209-12		12"
						1200-04	4"	4"
						1200-08		8"
						1200-12		12"

Navy and Commercial Marine Approved



website www.sunbeltstudwelding.com email info@sunbeltstudwelding.com
 6381 Windfern Road, Houston, TX 77040 telephone 1.800.462.9353 - Houston 713.939.8903 fax 713.939.9013