

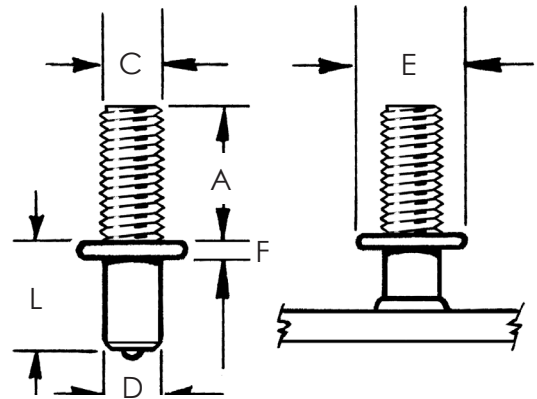
Arc Weld Studs - Externally Threaded

TC - THREADED COLLAR WELD STUDS - TECHNICAL DETAILS

TC weld studs are available in mild steel and stainless steel materials.

TC studs are used to provide a spacer between the base metal and the attached part.

For application, dimensional and in stock assistance, please contact Sunbelt Stud Welding.



Stud Specifications						Standard Accessories			
Base Diameter	Min. Length	Max. Thread Diameter	Std. Thread Length	Collar Diameter	Collar Thickness				
D	L	C	A	E	F	Ferrule	Foot	Grip	Chuck
0.215	0.375	1/4 - 20	0.250	0.500	0.125	F025-TC	B-2N	GN-062	CN-025
0.275	0.375	5/16 - 18	0.312	0.578	0.141	F031-TC	B-2N	GN-062	CN-031
0.330	0.375	3/8 - 16	0.375	0.688	0.156	F037-TC	B-2N	GN-062	CN-037
0.446	0.500	1/2 - 13	0.500	0.797	0.188	F050-TC	B-2N	GN-075	CN-050

To order or specify give: Stud Code, Dimensions D x L; C x A, Material and Quantity

Example: TC, .330 x 1 with 3/8-16 x 5/8, (BW), Stainless, 2200 pcs.

Specify (L) Length on a Before Weld basis by indicating "BW"

or on an After Weld basis by indicating "AW."

See **Accessories** for accessory detail and **Ferrule Specifications** for ferrule options.

See **Arc Stud Welding – General Information** and **Technical Details** for industry specifications, thread options, Before Weld (BW) length, flux, raw material details, plating options, annealing, load strengths and shipping weights.

