

# Arc Weld Studs - Rectangular Studs

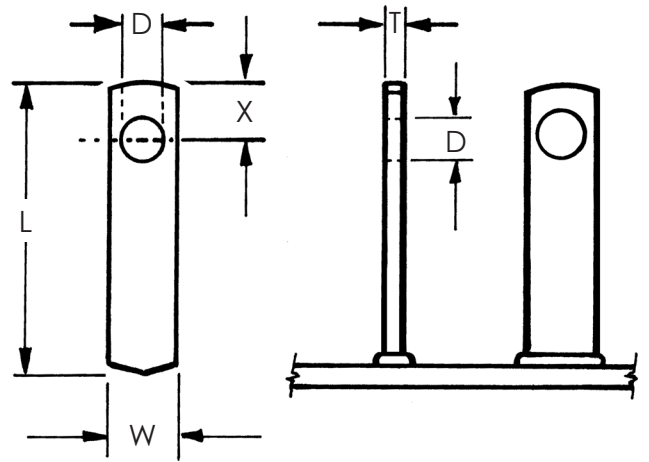
## RH - RECTANGULAR W/HOLE WELD STUD - TECHNICAL DETAILS

RH weld studs are available in mild steel and stainless steel materials.

RH studs are commonly used for fastening and attachment purposes. Bolts or wires are installed in the hole to make the connection.

To stud weld RH studs, rectangular chucks, standard foot pieces and standard ferrule grips are typically used.

For application, dimensional and in stock assistance, please contact Sunbelt Stud Welding.



Stud Specifications					Standard Accessories			
Thickness*	Width*	Length (Min.)	Hole Information		Ferrule	Foot	Grip	Chuck
T	W	L	D	X	P/N	P/N	P/N	P/N
0.125	0.375	1.000	0.203	0.313	F037-R1	B-1N	GN-037	CR-CB
0.125	0.625	1.000	0.313	0.313	F062-R1	B-2N	GN-075	CR-CC

\* Other sizes are available upon request.

To order or specify give: Stud Code, T x W x L, w/ D & X, Material and Quantity

Example: RH, 1/8 x 0.625 x 1.50, (BW), with .313 x .313, mild steel, 1000 pcs.

Specify (L) Length, on a Before Weld basis by indicating "BW"

or on an After Weld basis by indicating "AW."

See **Accessories** for accessory detail and **Ferrule Specifications** for ferrule options.

See **Arc Stud Welding – General Information** and **Technical Details** for industry specifications, thread options, Before Weld (BW) length, flux, raw material details, plating options, annealing, load strengths and shipping weights.

