

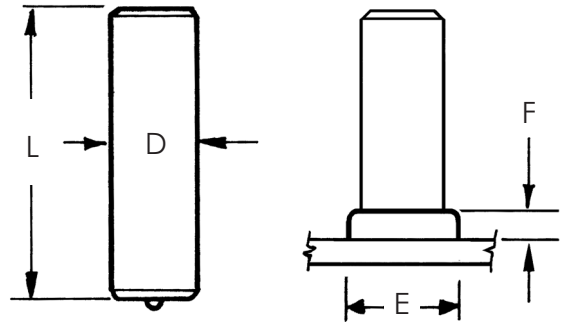
Arc Weld Studs - No Thread Studs

NT - NO THREAD WELD STUDS - TECHNICAL DETAILS

NT weld studs are available in mild steel and stainless steel materials.

NT studs are used as locating pins, spacers, stops, rotational points and tong holds.

For application, dimensional and in stock assistance, please contact Sunbelt Stud Welding.



Stud Specifications				Standard Accessories			
Base Diameter	Min. Stud Length	Flash Dimensions		Ferrule	Foot	Grip	Chuck
D	L	E	F	P/N	P/N	P/N	P/N
0.250	0.781	0.359	0.109	F025-F	B-1N	GN-025	CN-025
0.312	0.781	0.438	0.109	F031-F	B-1N	GN-031	CN-031
0.375	0.781	0.500	0.125	F037-F	B-1N	GN-037	CN-037
0.437	0.781	0.578	0.141	F043-F	B-1N	GN-043	CN-043
0.500	0.813	0.688	0.156	F050-F	B-1N	GN-050	CN-050
0.625	0.969	0.780	0.188	F062-F	B-2N	GN-062	CN-062
0.680	1.000	0.938	0.250	F075-P	B-2N	GN-075	CN-068
0.750	1.250	1.016	0.250	F075-F	B-2N	GN-075	CN-075
0.875	1.500	1.125	0.313	F087-F	B-3N	GN-087	CN-087
1.000	1.641	1.375	0.375	F100-F	B-3N	GN-100	CN-100

To order or specify give: Stud Code, Diameter, Length
Example: NT, 5/8 x 1.75, (BW), Stainless Steel, 2500 pcs.
Specify (L) Length on a Before Weld basis by indicating "BW"
or on an After Weld basis by indicating "AW."

See **Accessories** for accessory detail and **Ferrule Specifications** for ferrule options.

See **Arc Stud Welding – General Information** and **Technical Details** for industry specifications, thread options, Before Weld (BW) length, flux, raw material details, plating options, annealing, load strengths and shipping weights.

