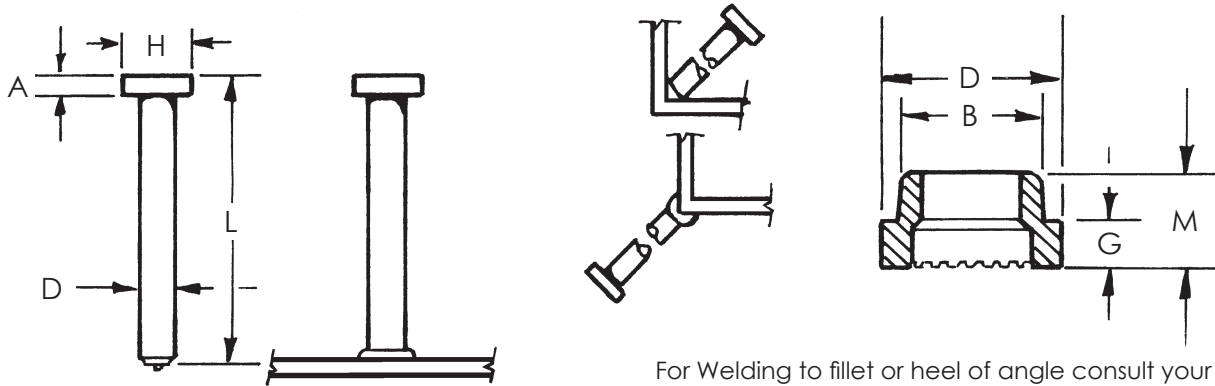


Arc Weld Studs - Concrete Anchors

HCA - HEADED CONCRETE ANCHOR - TECHNICAL DETAILS



For Welding to fillet or heel of angle consult your Sunbelt Stud Welding representative for assistance.

Stud Specifications			Ferrule Specifications				
D	H	A	No.	D	B	G	M
1/4	.500	.187	F025-F	.455	.380	.234	.390
3/8	.750	.281	F037-F	.640	.505	.234	.390
1/2	1.000	.281	F050-F	.795	.650	.250	.438
5/8	1.250	.312	F062-F	1.030	.785	.328	.516

Headed Concrete Anchors are used in all types of concrete connections. They can be welded to a flat surface, inside of an angle or outside of an angle.

Specifications – HCA's meet AWS Specifications D1.1, D1.5 and or D1.6. International Specifications BS5950, BS5400, DIN/ISO are available.

Material – Low carbon steel, ASTM A108 / A29, Grade C1010 to C1020. In Stainless Steel, grades 302, 304, 310 and 316 are stocked in some sizes.

Ferrules – Customer to specify ferrule type at time of order.

Length – Lengths are listed before welding. For Stud Diameters (D) 1/2" and smaller the length reduction is roughly 1/8" and for (D) 5/8" the reduction is roughly 3/16". HCA's can be made in any length above the standard minimum.

Accessories – For a complete list of accessories required with each ferrule type, please see next page.

Mechanical Property Requirements		
	Type A	Type B
Tensile Strength	61,000 psi min.	65,000 psi min.
Yield Strength	49,000 psi min.	51,000 psi min.
Elongation (% in 2 in.)	17% min.	20% min.
Elongation (% in 5x dia.)	14% min.	15% min.
Reduction of Area	50% min.	50% min.
Type A Studs are general purpose studs.		
Type B Studs are headed, bent, or of other configuration that are used as an essential component in composite beam design and construction.		



Arc Weld Studs - Concrete Anchors

HCA - HEADED CONCRETE ANCHOR - ACCESSORY DETAILS

Stud Diameter	Chuck P/N	Ferrule Type	Ferrule P/N	Foot P/N	Grip P/N	Ferrule Foot Plate P/N (Dual Leg)
1/4"	CN-050	Flat	F025-F	B-1C	GC-025	QN-025
		Low Profile	F025-LP	B-1C	GC-025	QN-025
		Heavy Duty	F025-HD	B-1C	GC-037	QN-037
		Inside Angle	F025-IA	B-1C	GD-025	N/A
		Outside Angle	F025-OA	B-1C	GC-025	QN-025
3/8"	CH-037	Flat	F037-F	B-1C	GC-037	QN-037
		Low Profile	F037-LP	B-1C	GC-037	QN-037
		Heavy Duty	F037-HD	B-1C	GC-050	QN-050
		Inside Angle	F037-IA	B-1C	GD-037	N/A
		Outside Angle	F037-OA	B-1C	GC-037	QN-037
		Weld Thru Deck	FO37-TD	B-002I	B-0060-3	N/A
1/2"	CH-050	Flat	F050-F	B-1C	GC-050	QN-050
		Low Profile	F050-LP	B-1C	GC-050	QN-050
		Vertical	F050-V	B-1C	GC-050	QN-050
		Heavy Duty	F050-HD	B-2C	GC-062	QN-062
		Inside Angle	F050-IA25	B-1C	GD-050	N/A
		Inside Angle	F050-IA37	B-1C	GD-050	N/A
		Outside Angle	F050-OA	B-1C	GC-050	QN-050
		Weld Thru Deck	F050-TD	B-002I	B-0060-2	N/A
5/8"	CH-075	Flat	F062-F	B-2C	GC-062	QN-062
		Low Profile	F062-LP	B-2C	GC-062	QN-062
		Vertical	F062-V	B-2C	GC-062	QN-062
		Heavy Duty	F062-HD	B-2C	GC-075	QN-075
		Inside Angle	F062-IA25	B-2C	GD-062	N/A
		Inside Angle	F062-IA37	B-2C	GD-062	N/A
		Outside Angle	F062-OA	B-2C	GN-062	QN-062
		Weld Thru Deck	F062-TD	B-002I	B-0060-2	N/A



Arc Weld Studs - Concrete Anchors

HCA - HEADED CONCRETE ANCHOR - STANDARD SIZES - PART 1

Specifications			Packaging Detail			Weights - in pounds		
Diameter	Length	SSW Part Number (mild steel)	Pieces Per Box	Boxes Per Pallet	Pieces Per Pallet	Box Weight	Pallet Weight	1,000 Pcs. Weight
D	L							
1/4	1 - 1/8	HCAM0250112	2,000	27	54,000	48	1,296	24
	2 - 11/16	HCAM0250268	1,000	27	27,000	45	1,215	45
	3 - 1/8	HCAM0250312	1,000	27	27,000	51	1,377	51
	4 - 1/8	HCAM0250412	600	27	16,200	39	1,053	65
3/8	1 - 1/8	HCAM0370112	1,000	27	27,000	70	1,890	70
	1 - 5/8	HCAM0370162	1,000	27	27,000	79	2,133	79
	2 - 1/8	HCAM0370212	700	27	18,900	67	1,809	96
	2 - 5/8	HCAM0370262	600	27	16,200	66	1,782	110
	3 - 1/8	HCAM0370312	500	27	13,500	62	1,674	124
	4 - 1/8	HCAM0370412	350	27	9,450	55	1,485	157
	5 - 1/8	HCAM0370512	300	27	8,100	56	1,512	187
	6 - 1/8	HCAM0370612	200	27	5,400	44	1,188	220
1/2	8 - 1/8	HCAM0370812	250	27	6,750	69	1,863	276
	1 - 1/8	HCAM0500112	600	27	16,200	68	1,836	113
	1 - 1/2	HCAM0500150	500	27	13,500	68	1,836	136
	1 - 5/8	HCAM0500162	450	27	12,150	64	1,728	142
	2 - 1/8	HCAM0500212	400	27	10,800	67	1,809	168
	2 - 5/8	HCAM0500262	350	27	9,450	71	1,917	203
	3 - 1/8	HCAM0500312	300	27	8,100	68	1,836	227
	4 - 1/8	HCAM0500412	200	27	5,400	56	1,512	280
	5 - 5/16	HCAM0500531	150	27	4,050	52	1,404	347
	6 - 1/8	HCAM0500612	125	27	3,375	49	1,323	392
	8 - 1/8	HCAM0500812	100	27	2,700	50	1,350	500
	10 - 1/8	HCAM0501012	75	27	2,025	51	1,377	680
12 - 1/8	HCAM0501212	1500	1	1500	1095	1120	1095	

For non standard sizes contact Sunbelt Stud Welding.

(continued on next page)



Arc Weld Studs - Concrete Anchors

HCA - HEADED CONCRETE ANCHOR - STANDARD SIZES - PART 2

Specifications			Packaging Detail			Weights - in pounds		
Diameter	Length	SSW Part Number (mild steel)	Pieces Per Box	Boxes Per Pallet	Pieces Per Pallet	Box Weight	Pallet Weight	1,000 Pcs. Weight
D	L							
5/8	1 - 7/16	HCAM0620143	400	27	10,800	85	2,295	213
	1 - 11/16	HCAM0620168	325	27	8,775	77	2,079	237
	1 - 15/16	HCAM0620193	300	27	8,100	78	2,106	260
	2 - 1/8	HCAM0620212	250	27	6,750	68	1,836	272
	2 - 3/16	HCAM0620218	250	27	6,750	71	1,917	284
	2 - 11/16	HCAM0620268	250	27	6,750	81	2,187	324
	3 - 3/16	HCAM0620318	200	27	5,400	75	2,025	375
	3 - 11/16	HCAM0620368	150	27	4,050	75	1,674	413
	4 - 3/16	HCAM0620418	150	27	4,050	62	1,863	460
	4 - 11/16	HCAM0620468	125	27	3,375	69	1,701	504
	5 - 3/16	HCAM0620518	100	27	2,700	55	1,485	550
	6 - 9/16	HCAM0620656	90	27	2,430	55	1,485	611
	8 - 3/16	HCAM0620818	80	27	2,160	52	1,404	650
	9 - 3/16	HCAM0620918	150	9	1,350	117	1,053	780
	10 - 3/16	HCAM0621018	100	9	900	98	882	980

For non standard sizes contact Sunbelt Stud Welding.

