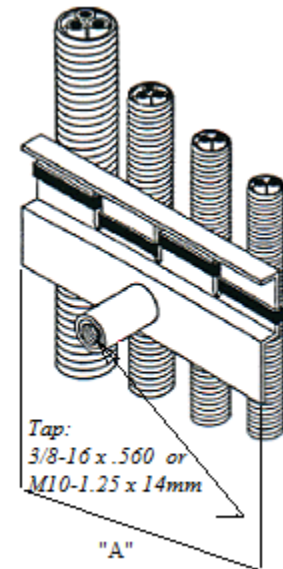




## CABLE HANGERS: TAPPED-SLOTTED

TAPPED CABLE HANGER				
PART #	TURNING RADIUS	ALLOY	MAX # OF SLOTS	"A"
SBS-002	1-1/4"	SS-316	1	2"
SBS-003	1-7/8"	SS-316	2	3"
SBS-004	2-1/2"	SS-316	3	4"
SBS-006	3-3/4"	SS-316	5	6"
SBS-008	5"	SS-316	7	8"

Note: "A" dimension by inches  
Other alloys available upon request



### Special Features of the Slotted Cable Hanger

- Easily installs onto 3/8" or M10 diameter weld stud
- Mount cables with tie-wrap or banding strap
- Cables individually supported
- Accommodates different size diameter cables without bunching
- Add or remove cables without disturbing existing cables
- Neat appearance
- Less inventory
- In-stock item

### Fastening a Tapped Cable Hanger is Easy

1. Weld a standard 3/8" or M10 diameter weld stud.
2. Spin desired cable hanger onto the weld stud.
3. Attach cables either by: *crimping* hanger or *banding* to hanger

Available in 316SS

[www.sunbeltstudwelding.com](http://www.sunbeltstudwelding.com)

**Sunbelt Stud Welding, Inc**  
6381 Windfern Road  
Houston, Texas 77040-4915



16-9

**1-800-462-9353**  
**713-939-8903**  
**fax 713-939-9013**