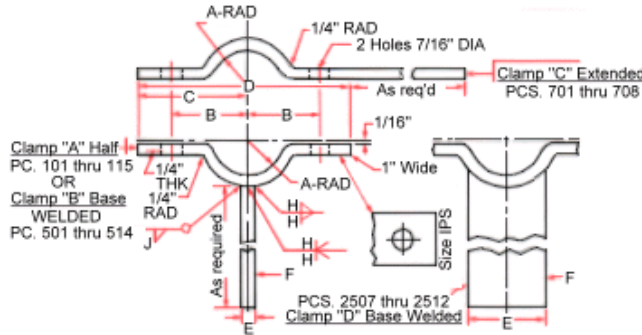




# PIPE HANGER: CLIP TYPE, WELDED TYPE, EXTENDED TYPE



<b>PIPE HANGER</b>												
NOM IPS SIZE	PIPE CLAMP TYPE & PART NO.				NOTES: 1. Clamps avail. with plain painted (yellow zinc chromate) or galvanized finish 2. Ref. Dwg. Buships No. 845-2069186 3. Material: Steel, ASTM-A36 or equal							
	A	B	C	D	A	B	C	D	E	F	H	J
1/4"	101	501	701	--	17/32"	1 1/4"	1 7/8"	3 3/4"	1/4"	1"	3/16"	--
3/8"	102	502	702	--	19/32"	1 3/8"	2"	4"	1/4"	1"	3/16"	--
1/2"	103	503	703	--	11/16"	1 7/16"	2 1/16"	4 1/8"	1/4"	1"	3/16"	--
3/4"	104	504	704	--	25/32"	1 9/16"	2 3/16"	4 3/8"	1/4"	1"	3/16"	--
1"	105	505	705	--	29/32"	1 11/16"	2 5/16"	4 5/8"	1/4"	1"	3/16"	--
1 1/4"	106	506	706	--	1 3/32"	1 7/8"	2 1/2"	5"	3/8"	1"	1/4"	--
1 1/2"	107	507	707	--	1 7/32"	2 1/16"	2 11/16"	5 3/8"	3/8"	1"	1/4"	--
2"	108	508	708	--	1 7/16"	2 9/32"	2 29/32"	5 13/16"	3/8"	1"	1/4"	--
2 1/2"	109	509	--	--	1 11/16"	2 17/32"	2 5/32"	6 5/16"	3/8"	1"	1/4"	--
3"	110	510	--	--	2"	2 27/32"	3 15/32"	6 15/16"	3/8"	1"	1/4"	--
3 1/2"	111	511	--	--	2 1/4"	3 1/8"	3 3/4"	7 1/2"	3/8"	1"	1/4"	--
4"	112	512	--	--	2 1/2"	3 11/32"	3 31/32"	7 15/16"	1/2"	1"	5/16"	--
5"	113	513	--	--	3 1/32"	3 29/32"	4 17/32"	9 1/16"	1/2"	1"	5/16"	--
6"	114	514	--	--	3 9/16"	4 7/16"	5 1/16"	10 1/8"	1/2"	1"	5/16"	--
8"	115	--	--	--	4 9/16"	5 15/32"	6 3/32"	12 3/16"	--	--	--	--
1 1/2"	--	--	--	2507	1 7/32"	2 1/16"	2 11/16"	5 3/8"	1 1/2"	1/2"	--	5/16"
2"	--	--	--	2508	1 7/16"	2 9/32"	2 29/32"	5 13/16"	1 1/2"	1/2"	--	5/16"
2 1/2"	--	--	--	2509	1 11/16"	2 17/32"	3 5/32"	6 5/16"	1 1/2"	1/2"	--	5/16"
3"	--	--	--	2510	2"	1 27/32"	3 15/32"	6 15/16"	1 1/2"	1/2"	--	5/16"
3 1/2"	--	--	--	2511	2 1/4"	3 1/8"	3 3/4"	7 1/8"	1 1/2"	1/2"	--	5/16"
4"	--	--	--	2512	2 1/2"	3 11/32"	3 31/32"	7 15/16"	1 1/2"	1/2"	--	5/16"

[www.sunbeltstudwelding.com](http://www.sunbeltstudwelding.com)

Sunbelt Stud Welding, Inc  
6381 Windfern Road  
Houston, Texas 77040-4915



1-800-462-9353  
713-939-8903  
fax 713-939-9013