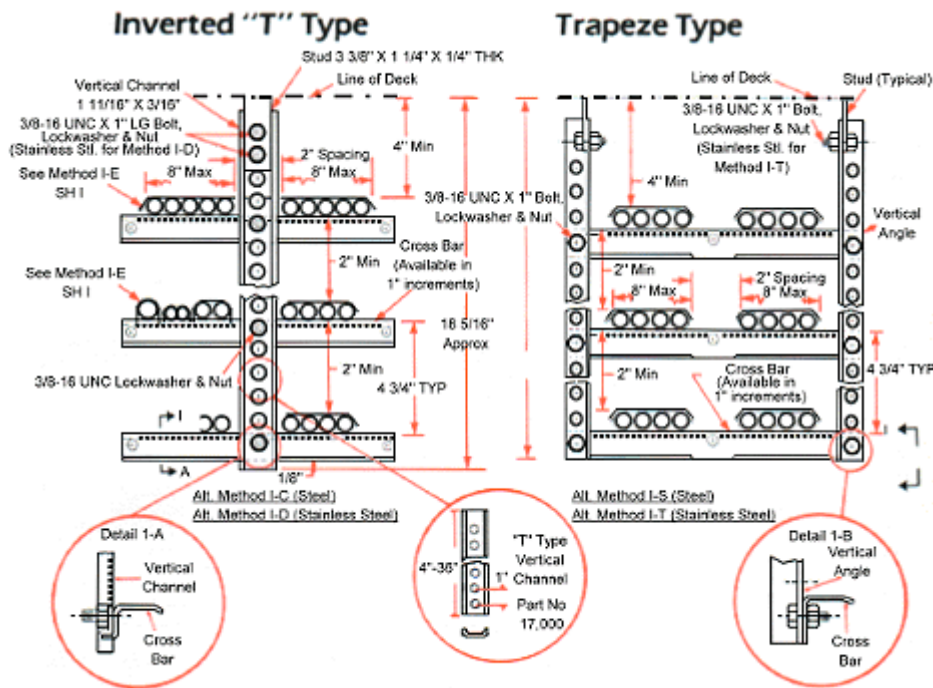




# INVERTED "T" AND TRAPEZE HANGER

## METHODS OF SUPPORTING CABLES:



- All hanger components are available in high weldable grade steel, stainless steel & aluminum, with finish to customer's specification.
- All hangers can be supplied pre-assembled to the customer's exact loading and stacking requirements or unassembled.
- All hanger components can be assembled into one (1) to five (5) tier configurations ("T" or "Trapeze") utilizing standard 3/8-16 hardware (hex bolt, nut & lockwasher), allowing increments of adjustment between the cross-tiers of one (1") inch over the full length of the channel or angle leg support.
- The cross-tier is completely interchangeable and can be used for either the "T" or "Trapeze" style assembly.

[www.sunbeltstudwelding.com](http://www.sunbeltstudwelding.com)

**Sunbelt Stud Welding, Inc.**  
**6381 Windfern Road**  
**Houston, Texas 77040-4915**



**1-800-462-9353**  
**713-939-8903**  
**fax 713-939-9013**