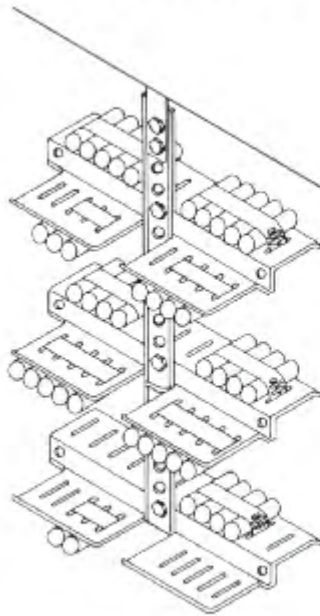




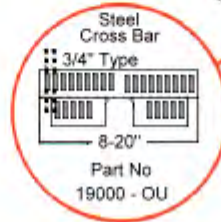
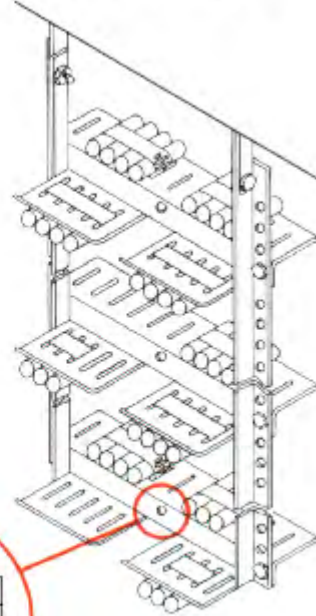
INVERTED "T" AND TRAPEZE HANGER W/OVER & UNDER CROSSBARS

TYPICAL SHIPBOARD INSTALLATION

Inverted "T" Type



Trapeze Type



For applications where cable must be run through areas with limited overhead space, the over and under style system with over and under cross bars #19000-OU is available. It is identical to the #19000 cross bar, except that it has an extra tier to facilitate another layer of cable.

The Inverted "T" & Trapeze Over and Under System is available in high weldable grade steel and type 304 or 316 stainless steel.

The Inverted "T" & Trapeze Over and Under System conforms to the test arrangement criteria of Navships DWG. 9000-S6202-73980, section 1 sheet G and has been successfully tested to MIL-S-901C, Grade A, Class 1 shock, and MIL-STD-167-1, Type 1 (5-15 Hz) vibration.

The Inverted "T" & Trapeze Over and Under System is manufactured in complete accordance with the detail specifications outlined in Navships DWG. 9000-S6202-73980, with all banding slots in the cross bar having complete capability for use with standard banding methods or "Snaplock" cable clamps.

www.sunbeltstudwelding.com

Sunbelt Stud Welding, Inc.
6381 Windfern Road
Houston, Texas 77040-4915



15-15

1-800-462-9353
713-939-8903
fax 713-939-9013