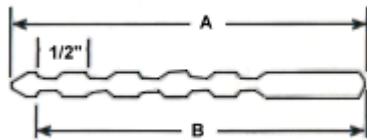




REFRACTORY WELD STUDS: INSULTWIST

To order or specify give:
 Product Code: **IT** Diameter: Specify **D** Length: Specify **L** Material: Specify

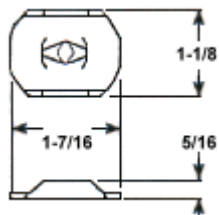


STUD	
MIN L	FERRULE CODE
2"	F187

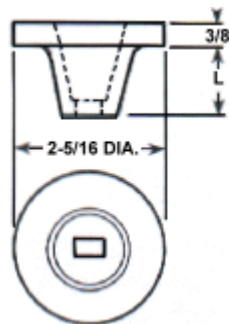
MATERIAL	INCONEL AISI grade - 601 std. Other grades available upon request.	STAINLESS STEEL AISI grade - 304, 310 and 330 standard Other grades available upon request.
MECHANICAL PROPERTIES	Values for various grades available upon request.	Values for various grades available upon request.

Lok Washer

Product Code
WCH ULW\$HR



APPLICATION	Designed for 1/4 turn locking on to SUNBELT INSULTWIST refractory anchors.
MATERIAL	Stainless Steel: 304 Stainless Steel: 310 Stainless Steel: 330 Inconel: 601



Insultwist Lok Cup

Product Code
WCH ULCUP

APPLICATION	Designed for 1/4 turn locking on to Sunbelt Stud Welding Insultwist refractory anchors.		
MATERIAL	Ceramic (High Temperature)		
SIZE	<table border="1" style="width: 100%;"> <tr> <td style="background-color: #800000; color: white;">L</td> <td>Short - 1" Long - 2"</td> </tr> </table>	L	Short - 1" Long - 2"
L	Short - 1" Long - 2"		

Note: Washers are not a component part of studs.

www.sunbeltstudwelding.com

Sunbelt Stud Welding, Inc
 6381 Windfern Road
 Houston, Texas 77040-4915



1-800-462-9353
713-939-8903
 fax **713-939-9013**