



## SECTION 4

### ARC WELD STUDS – REFRACTORY ANCHORS

FOR INQUIRIES, TO PLACE ORDERS,  
SERVICE AND TECHNICAL SUPPORT CONTACT  
ANY OF THE FOLLOWING:

OFFICE: 1-800-462-9353  
713-939-8903

EMAIL: [INFO@SUNBELTSTUDWELDING.COM](mailto:INFO@SUNBELTSTUDWELDING.COM)



**website** [www.sunbeltstudwelding.com](http://www.sunbeltstudwelding.com) **email** [info@sunbeltstudwelding.com](mailto:info@sunbeltstudwelding.com)  
6381 Windfern Road, Houston, TX 77040 **telephone** 1.800.462.9353 - Houston 713.939.8903 **fax** 713.939.9013

# Refractory Studs

## REFRACTORY STUDS



RECTANGULAR  
TWO TINE



RECTANGULAR  
THREE TINE



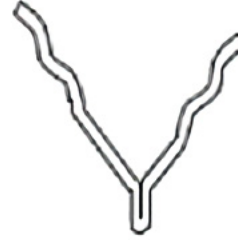
RECTANGULAR  
CORRUGATED



INSULTWIST



BULL HORN



"Y" ANCHOR



SPLIT PIN



"T" PLATE



KNURLED

\*other studs available on request



website [www.sunbeltstudwelding.com](http://www.sunbeltstudwelding.com) email [info@sunbeltstudwelding.com](mailto:info@sunbeltstudwelding.com)  
6381 Windfern Road, Houston, TX 77040 telephone 1.800.462.9353 - Houston 713.939.8903 fax 713.939.9013

# General Specifications - Arc Stud Welded Anchors

## GENERAL SPECIFICATIONS – ARC STUD WELDED ANCHORS

Arc Stud Welded Refractory Anchors			
<b>Material</b>	Standard in low carbon steel and 302/304/305 stainless. Monel, inconel, and other grades of stainless steel are available.		
<b>Plating</b>	Plating is not standard. Cadmium to ASTM A 165, type TS and zinc to ASTM B 633 are available. Non-weldable plating is removed from the weld end to avoid contamination of the weld.		
<b>Annealing</b>	Low carbon steel can be annealed to a maximum of 75 Rockwell B and stainless steel to a maximum of 90 Rockwell B.		
<b>Weld Base</b>	Solid flux is provided where required.		
<b>Stud Length</b>	SUNBELT arc stud length designations are BEFORE WELD.  AFTER WELD lengths are shown in the table.	<b>Stud Diameter</b>	<b>Approx. Reduction</b>
		3/16" thru 1/2"	1/8"
		5/8" thru 7/8"	3/16"
		7/8" and over	1/4"
<b>Ferrules</b>	All orders include ferrules when required.	1/8" wide rectangulars	1/8"

### DESIGNING WITH SUNBELT ARC STUD WELDED REFRACTORY ANCHORS

**Advantages:** Sunbelt Arc stud welded refractory anchors reduce costs and downtime and increase production through speedier installation and improved product quality.

Arc stud welding systems are portable and require minimal instruction or maintenance for use.

Speed of anchor application and ease of use reduce labor requirements and eliminate other complicated fastening systems while maintaining excellent weld quality and improved refractory holding power.

### HOW TO CHOOSE THE PROPER REFRACTORY ANCHOR

**Style:** See table on page 4.4.

**Material:** The following temperature limits at the hot face or surface of the refractory, are recommended for anchors of the steel grades shown.

Steel Type	Hot Face Temperature Limit
Low Carbon Steel	1000° F
Stainless-304 or 305	2000° F
Stainless-309 or 310	2500° F

The temperatures indicated are those encountered in continuous service. Slightly higher temperatures can be withstood if the fluctuation is cyclic in nature. For applications above 2500° F, the anchors can be made of inconel or other special metals.



# Arc Stud Welded Refractory Anchor Application Guide (Table #2)

**ARC STUD WELDED REFRACTORY ANCHOR – APPLICATION GUIDE (TABLE #2)**

Application		Refractory Anchor Style													
		RA EJ-256	ARC ST	ARC B-NT	ARC R-WH	ARC R-TS	RA R-2T	RA R-3T	RA R-C	RA UL	RA BH	RA Y	RA SP	RA T-PLT	RA EJ-801
Rebar & Mesh	a) Reinforcing Bar														
	b) Wire Mesh														
	c) Hex-Mesh Steel														
Block Insulation Only															
Concrete Construction															
Refractory Construction	a) Castables														
	b) Plastics														
	c) Gunning Mixes														
	d) Block Insulation														
Single Component Linings	a) Under 5" Thick														
	b) Over 5" Thick														
Two Component Linings	a) Under 5" Thick														
	b) Over 5" Thick														
	c) Brick Backing														
	d) Castable Backing														
	e) Block Insulation Backing														



# Arc Stud Welded Refractory Anchor Application Guide (continued)

## HOW TO APPLY THE REFRACTORY ANCHOR

**ANCHOR LENGTH & SPACING:** All information given in this section is general and may vary according to special service conditions encountered. Therefore, this information should only be used as a guide.

The anchor length shown is the after-weld length of the longest section of the anchor. The lengths (in table #3 on the next page) are recommended to insure good refractory holding power, while preventing rapid oxidation of the anchor and preventing spalling of the refractory surface.

Generally the anchor length should be about 75% of the refractory depth, however, the end of the anchor should never be closer to the refractory hot face than 1". The anchor spacing will be determined by the type and density of the refractory used, and how and where it is to be applied.

For anchoring purposes, the refractory can be classified as LOW DENSITY (25-90 lbs. per cu. ft.) and HIGH DENSITY (100-200 lbs. per cu. ft.). High-density material can be used in one component linings of any thickness. Low-density material is only used in one component linings to a depth of 6". Frequently, in sections more than 6" thick, high-density material composes the working lining with a back up of low-density material.



# Refractory Anchor Placement (Table #3)

**REFRACTORY ANCHOR PLACEMENT (TABLE #3)**

Refractory Thickness	Anchor Length	Refractory Density	Center - Center Anchor Spacing	
			Wall	Roof
2"	1"	Low High	12" x 12" 18" x 18"	9" x 9" 12" x 12"
3"	2"	Low High	12" x 12" 18" x 18"	12" x 12" 18" x 18"
4"	3"	Low High	12" x 12" 18" x 12"	12" x 12" 18" x 12"
5"	3-1/2"	Low High	12" x 12" 18" x 12"	12" x 9" 18" x 12"
6"	4-1/2"	High Low	12" x 9" 18" x 12"	9" x 9" 12" x 12"
7"	5"	High	18" x 12"	12" x 12"
8"	6"	High	18" x 12"	12" x 12"
9"	6-1/2"	High	18" x 12"	12" x 9"
10"	7-1/2"	High	12" x 12"	12" x 9"
11"	8"	High	12" x 12"	12" x 9"
12"	9"	High	12" x 12"	12" x 9"
13"	10"	High	12" x 12"	12" x 9"

**QUANTITY OF ANCHORS REQUIRED (TABLE #4)**

Anchor Spacing	9" X 9"	12" X 9"	12" X 12"	18" X 12"	18" X 18"
Anchors Required Per Square Foot	1.80	1.33	1.00	0.67	0.44



# Refractory Anchors: Anchor Patterns

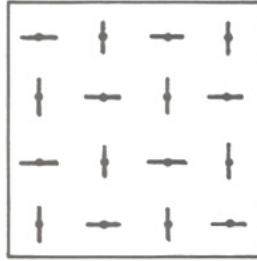
## REFRACTORY ANCHORS: ANCHOR PATTERNS

### ANCHOR PATTERNS

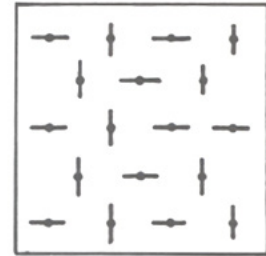
The three anchor patterns (shown below) are in use today; the latter two being the more popular. The important factor is that an irregular pattern is achieved by opposing anchors so that secure retention of the refractory in all directions is achieved.



Diamond Pattern



Square Pattern



Staggered Pattern

#### NOTE:

The expansion of the steel anchor is usually greater than that of the refractory material, especially in dense, high strength castables. Metallic refractory anchors can be coated with various materials that will burn off and allow room for the anchor to expand

Consult your refractory supplier for the proper refractory and coating material to meet your application needs.

# Arc Weld Studs - Rectangular Studs

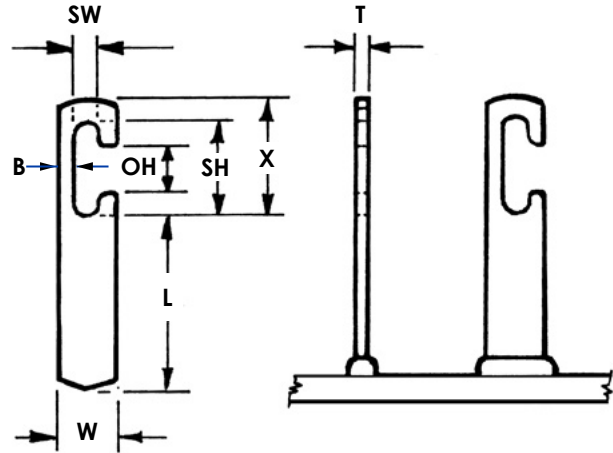
## RT - RECTANGULAR “T” SLOT WELD STUDS - TECHNICAL DETAILS

RT weld studs are available in mild steel and stainless steel materials.

RT studs are commonly used for securing wire mesh to furnaces. After installation, the mesh is filled with refractory material.

To stud weld RT studs, rectangular chucks, standard foot pieces and standard ferrule grips are typically used.

For application, dimensional and in stock assistance, please contact Sunbelt Stud Welding.



Stud Specifications

Thickness	Width	Length (Min.)	“T” Slot Details					Ferrule
T	W	L	OH	SH	X	B	SW	P/N
0.125	0.375	0.500	0.322	0.531	0.765	0.122	0.130	F037-R1
0.125	0.625	0.500	0.500	1.000	1.250	0.185	0.255	F062-R1

To order or specify give: Stud Code, T x W x L, Material and Quantity

Example: RH, 0.125 x 0.625 x .75, (BW), mild steel, 1000 pcs.

Specify (L) Length, on a Before Weld basis by indicating “BW”  
or on an After Weld basis by indicating “AW.”

See **Accessories** for accessory detail and **Ferrule Specifications** for ferrule options.

See **Threaded and No-Thread Weld Studs – Technical Details** for industry specifications, thread options, Before Weld (BW) length, flux, raw material details, plating options, annealing, load strengths and shipping weights.



website [www.sunbeltstudwelding.com](http://www.sunbeltstudwelding.com) email [info@sunbeltstudwelding.com](mailto:info@sunbeltstudwelding.com)  
6381 Windfern Road, Houston, TX 77040 telephone 1.800.462.9353 - Houston 713.939.8903 fax 713.939.9013



# Arc Weld Studs - Rectangular Studs

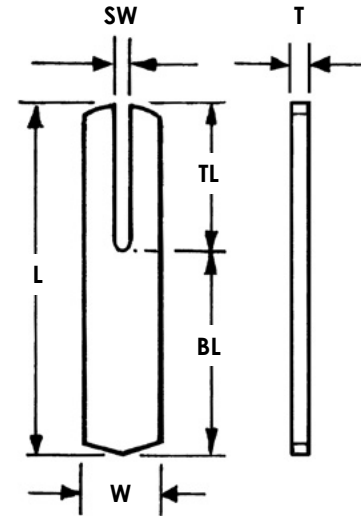
## R2 - RECTANGULAR - 2 TINE WELD STUDS - TECHNICAL DETAILS

R2 weld studs are available in mild steel and stainless steel materials.

R2 studs are used to secure refractory materials (blanket, block, cast, gunned and troweled) inside various types of furnaces and chimneys.

To stud weld R2 studs, rectangular chucks, standard foot pieces and standard ferrule grips are typically used.

For application, dimensional and in stock assistance, please contact Sunbelt Stud Welding.



Stud Specifications							Standard Accessories		
Thickness	Width	Length (Min.)	Length (Min.)	Length (Min.)	Slot Width	Ferrule	Foot	Grip	Chuck
T	W	L	BL	TL	SW	P/N	P/N	P/N	P/N
0.125	0.375	1.250	0.250	1.000	0.125	F037-R1	B-1N	GN-037	CR-CB
0.125	0.625	1.250	0.625	0.625	0.156	F062-R1	B-2N	GN-075	CR-CC

To order or specify give: Stud Code, T x W x BL x TL, Material and Quantity

Example: RA R2, 0.125 x 0.625 x 2 x 1, (BW), 304SS, 1000 pcs.

Specify (L) Length, on a Before Weld basis by indicating "BW"  
or on an After Weld basis by indicating "AW."

See Rectangular Weld Stud specifications for the flash dimensions of R2 type studs.

See **Accessories** for accessory detail and **Ferrule Specifications** for ferrule options.

See **Arc Stud Welding – General Information** and **Technical Details** for industry specifications, thread options, Before Weld (BW) length, flux, raw material details, plating options, annealing, load strengths and shipping weights.



website [www.sunbeltstudwelding.com](http://www.sunbeltstudwelding.com) email [info@sunbeltstudwelding.com](mailto:info@sunbeltstudwelding.com)  
6381 Windfern Road, Houston, TX 77040 telephone 1.800.462.9353 - Houston 713.939.8903 fax 713.939.9013

# Arc Weld Studs - Rectangular Studs

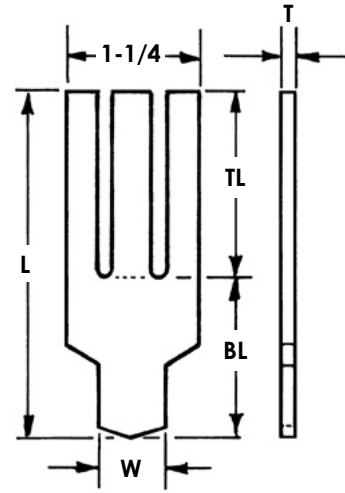
## R3 – RECTANGULAR – 3 TINE WELD STUDS – TECHNICAL DETAILS

R3 weld studs are available in mild steel and stainless steel materials.

R3 studs are used to secure refractory materials (blanket, block, cast, gunned and troweled) inside various types of furnaces and chimneys.

To stud weld R3 studs, rectangular chucks, standard foot pieces and standard ferrule grips are typically used.

For application, dimensional and in stock assistance, please contact Sunbelt Stud Welding.



Stud Specifications							Standard Accessories		
Thickness	Width*	Length (Min.)	Length (Min.)	Length (Min.)	Slot Width	Ferrule	Foot	Grip	Chuck
T	W	L	BL	TL	SW	P/N	P/N	P/N	P/N
0.125	0.625	2.250	1.250	1.000	0.156	F062-R1	B-2N	GN-075	CR-CB

\*Width represents weld base width.

To order or specify give: Stud Type, T x W x BL x TL, Material and Quantity

Example: R3, 0.125 x 0.625 x 1.50 x 2.5, (BW), Mild Steel, 1000 pcs.

Specify (L) Length, on a Before Weld basis by indicating "BW"  
or on an After Weld basis by indicating "AW."

See Rectangular Weld Stud specifications for the flash dimensions of R3 type studs.

See **Accessories** for accessory detail and **Ferrule Specifications** for ferrule options.

See **Arc Stud Welding – General Information** and **Technical Details** for industry specifications, thread options, Before Weld (BW) length, flux, raw material details, plating options, annealing, load strengths and shipping weights.



# Arc Weld Studs - Rectangular Studs

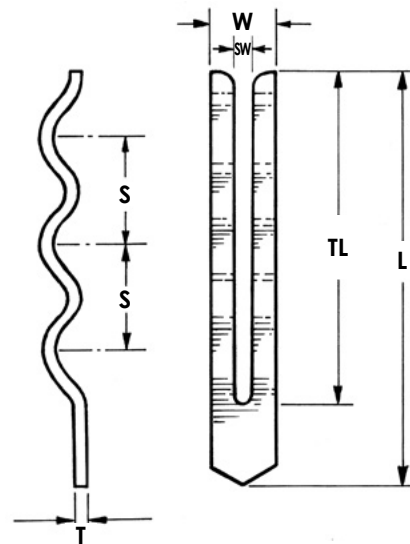
## R2W – RECTANGULAR – 2 TINE WIGGLE WELD STUDS – TECHNICAL DETAILS

R2W weld studs are available in mild steel and stainless steel materials.

Like the R2W studs, RW studs are used to secure refractory materials. The bends in the R2W stud help to preclude slippage of the refractory material when in service.

To stud weld RW studs, rectangular chucks, standard foot pieces and standard ferrule grips are typically used.

For application, dimensional and in stock assistance, please contact Sunbelt Stud Welding.



Stud Specifications							Standard Accessories		
Thickness	Width	Length Range*	Tine Length**	Wiggle Length	Slot Width	Ferrule	Foot	Grip	Chuck
T	W	L	TL	S	SW	P/N	P/N	P/N	P/N
0.125	0.625	2.125 - 3.0	1.625	1.031	0.156	F062-R1	B-2N	GC-075	CR-CC
0.125	0.625	3.125 - 4.0	2.625	1.031	0.156	F062-R1	B-2C	GC-075	CR-CC
0.125	0.625	4.13 - 7.13	3.250	1.031	0.156	F062-R1	B-2C	GC-075	CR-CC
0.125	0.625	5.50 - 8.50	4.625	1.031	0.156	F062-R1	B-2C	GC-075	CR-CC
0.125	0.625	6.88 - 9.88	6.000	1.031	0.156	F062-R1	B-2C	GC-075	CR-CC
* For lengths over 3", the split foot and split grip accessories are depicted.									
**Tine Length determines whether 1, 2 or 3 wiggles will be provided.									

To order or specify give: Stud Code, T x W x L, Material and Quantity

Example: R2W, 0.125 x 0.625 x 6, (BW), mild steel, 3000 pcs.

Specify (L) Length, on a Before Weld basis by indicating "BW"  
or on an After Weld basis by indicating "AW."

See RP Weld Stud specifications for the flash dimensions of RW type studs.

See **Accessories** for accessory detail and **Ferrule Specifications** for ferrule options.

See **Arc Stud Welding – General Information** and **Technical Details** for industry specifications, thread options, Before Weld (BW) length, flux, raw material details, plating options, annealing, load strengths and shipping weights.



website [www.sunbeltstudwelding.com](http://www.sunbeltstudwelding.com) email [info@sunbeltstudwelding.com](mailto:info@sunbeltstudwelding.com)  
6381 Windfern Road, Houston, TX 77040 telephone 1.800.462.9353 - Houston 713.939.8903 fax 713.939.9013

# Arc Weld Studs - Rectangular Studs

## RF - RECTANGULAR FIBER WELD STUDS - TECHNICAL DETAILS

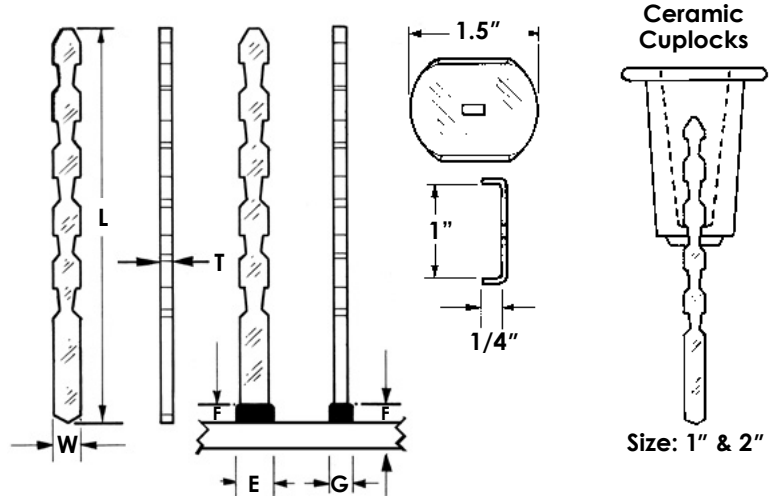
RF weld studs are available in mild steel and stainless steel materials. Material options and temperature limits are as follows:

304 SS - Temperature up to 1500 degrees F  
 310 SS - Temperature up to 1850 degrees F  
 330 SS - Temperature up to 2000 degrees F  
 601 Inconel - Temperature up to 2150 degrees F

RF studs are used to secure blanket insulation to furnaces. After the insulation is impaled over the RF studs, metal washers and or the ceramic cuplocks are installed and lock on the RF Stud to retain the insulation. The ceramic cuplock can be filled with refractory material or a ceramic plug.

Washers, ceramic cuplocks and cuplock plugs are sold separately. The RF stud and washer must be the same alloy.

For application, dimensional and in stock assistance, please contact Sunbelt Stud Welding.



Stud Specifications						Standard Accessories			
Thickness	Width	Length (Min.)	Flash Dimensions			Ferrule	Foot	Grip	Chuck
T	W	L	E	F	G	P/N	P/N	P/N	P/N
0.125	0.250	1.500	0.300	0.109	0.218	F025-R1	B-1C	GC-037	CR-CA

To order or specify give: Stud Code, T x W x L, Material and Quantity  
 Example: RIT (Insultwist Pin), 0.125 x 0.25 x 5.25, (BW), 601 Inconel, 3000 pcs.  
 Specify (L) Length, on a Before Weld basis by indicating "BW"  
 or on an After Weld basis by indicating "AW."

See **Accessories** for accessory detail and **Ferrule Specifications** for ferrule options.

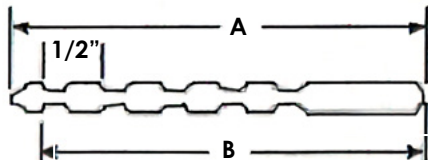
See **Arc Stud Welding – General Information** and **Technical Details** for industry specifications, thread options, Before Weld (BW) length, flux, raw material details, plating options, annealing, load strengths and shipping weights.



website [www.sunbeltstudwelding.com](http://www.sunbeltstudwelding.com) email [info@sunbeltstudwelding.com](mailto:info@sunbeltstudwelding.com)  
 6381 Windfern Road, Houston, TX 77040 telephone 1.800.462.9353 - Houston 713.939.8903 fax 713.939.9013

# Refractory Weld Studs: Insultwist

## REFRACTORY WELD STUDS: INSULTWIST PRODUCT CODE – RIT



Stud	
Min Length	2"
Ferrule Code	F025-R I

	Inconel	Stainless Steel
Material	AISI grade - 601 std. Other grades available upon request	AISI grade - 304, 310 and 330 standard Other grades available upon request
Mechanical Properties	Values for various grades available upon request	Values for various grades available upon request

To order or specify give: Product Code, Length, Material and Quantity

Example: RIT (Insultwist Pin), 2", Stainless Steel: 310, 1000 pcs.

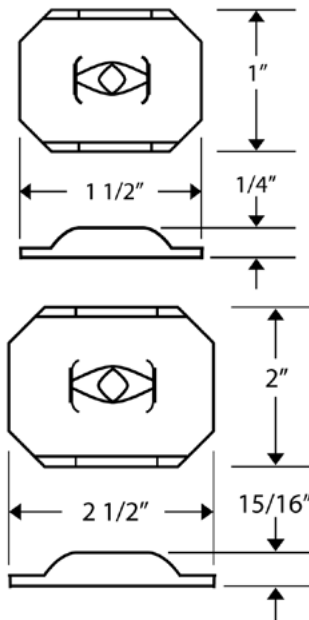
Note: Washers are not a component part of studs.

## LOCK WASHER PRODUCT CODE – RIT WAS

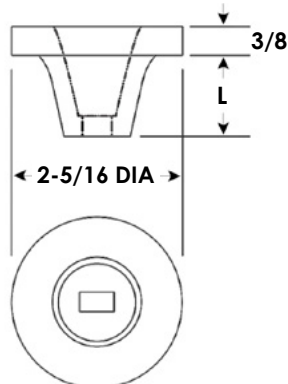
Application	Designed for 1/4 turn locking on to Sunbelt Insultwist refractory anchors.
Material	Stainless Steel: 304 Stainless Steel: 310 Stainless Steel: 330 Inconel: 601

To order or specify give: Product Code, Size, Material and Quantity

Example: RIT WAS, 1 1/2", Stainless Steel: 310, 1000 pcs.



## INSULTWIST LOCK CUP PRODUCT CODE – RIT CUP



Application	Designed for 1/4 turn locking on to Sunbelt Insultwist refractory anchors.	
Material	Ceramic (High Temperature)	
Size	L	Short - 1" Long: - 2"

To order or specify give: Product Code, Size and Quantity

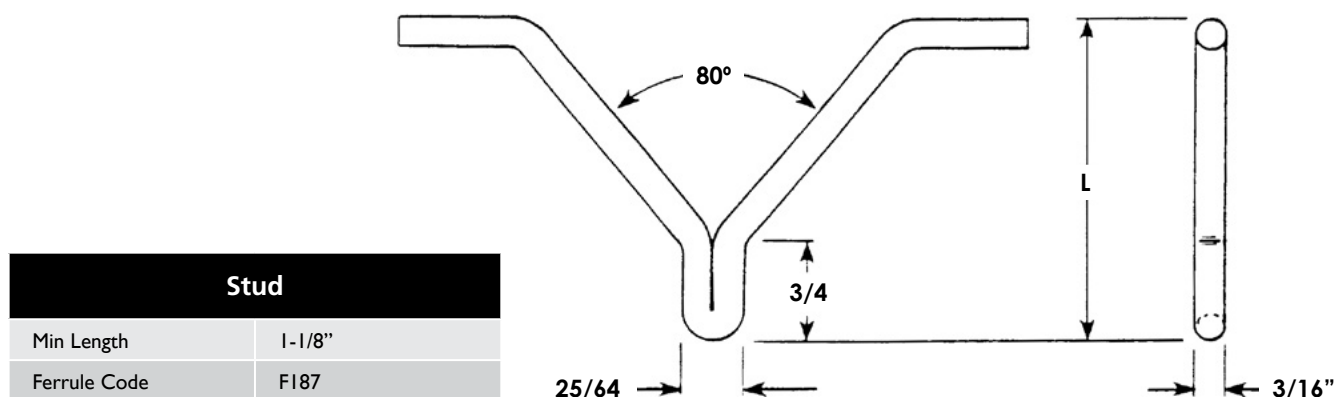
Example: RIT CUP, Long: - 2", 1000 pcs.



website [www.sunbeltstudwelding.com](http://www.sunbeltstudwelding.com) email [info@sunbeltstudwelding.com](mailto:info@sunbeltstudwelding.com)  
6381 Windfern Road, Houston, TX 77040 telephone 1.800.462.9353 - Houston 713.939.8903 fax 713.939.9013

# Refractory Weld Studs: Bull Horn

## REFRACTORY STUDS: BULL HORN



	Mild Steel	Stainless Steel
Material	C - .23% max. P - 0.04% max. Mn - 0.90% max. S - 0.05% max.	AISI grade - 304, 310, 316 and 330 standard Other grades available upon request
Mechanical Properties	Tensile - 60,000 psi (min.) Yield - 50,000 psi (min.) Elongation - 20% (in 2 inches)	Values for various grades available upon request
Plating	Plating is not standard. Cadmium, Copper, Nickel and Zinc available upon customer request.	Does not apply to Stainless

To order or specify give: Product Code, Diameter: 3/16, Length: L, Material and Quantity  
Example: RBH, 3/16, 1-1/8", Mild Steel, 1000 pcs.

See **Accessories** for accessory detail and **Ferrule Specifications** for ferrule options.

See **Threaded and No-Thread Weld Studs – Technical Details** for industry specifications, thread options, Before Weld (BW) length, flux, raw material details, plating options, annealing, load strengths and shipping weights.

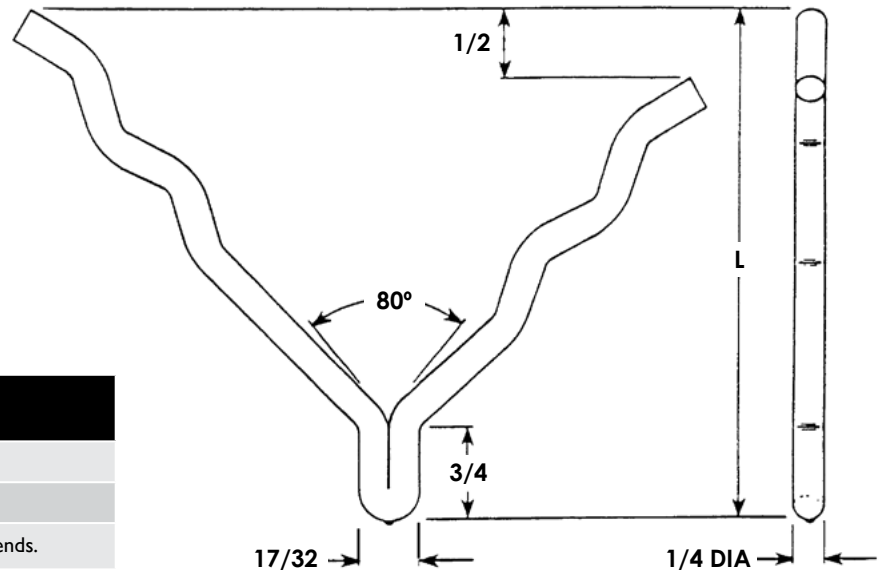


website [www.sunbeltstudwelding.com](http://www.sunbeltstudwelding.com) email [info@sunbeltstudwelding.com](mailto:info@sunbeltstudwelding.com)  
6381 Windfern Road, Houston, TX 77040 telephone 1.800.462.9353 - Houston 713.939.8903 fax 713.939.9013

# Refractory Weld Studs: "Y" Anchor

## REFRACTORY STUDS: "Y" ANCHOR

Product Code: RA Y



Stud	
Min Length	2-7/16"
Ferrule Code	RA250
Studs shorter than L MIN will have no bends.	

	Mild Steel	Stainless Steel
Material	C - .23% max. P - 0.04% max. Mn - 0.90% max. S - 0.05% max.	AISI grade - 304, 310, 316 and 330 standard Other grades available upon request
Mechanical Properties	Tensile - 60,000 psi (min.) Yield - 50,000 psi (min.) Elongation - 20% (in 2 inches)	Values for various grades available upon request

To order or specify give: Stud Code, Diameter 1/4", Length: L, Material and Quantity

Example: RA Y, 1/4", 2-7/16", Mild Steel, 1000 pcs.

See **Accessories** for accessory detail and **Ferrule Specifications** for ferrule options.

See **Arc Stud Welding – General Information** and **Technical Details** for industry specifications, thread options, Before Weld (BW) length, flux, raw material details, plating options, annealing, load strengths and shipping weights.



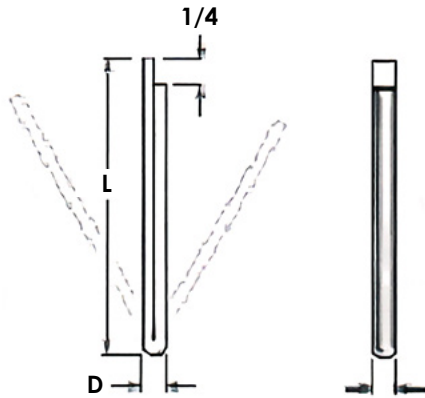
website [www.sunbeltstudwelding.com](http://www.sunbeltstudwelding.com) email [info@sunbeltstudwelding.com](mailto:info@sunbeltstudwelding.com)  
6381 Windfern Road, Houston, TX 77040 telephone 1.800.462.9353 - Houston 713.939.8903 fax 713.939.9013



# Refractory Weld Studs: Split Pin

## REFRACTORY STUDS: SPLIT PIN

Product Code: RA SP



Stud		
D	Min Length	Ferrule Code
3/16"	7/8"	P250
1/4"	7/8"	P312
5/16"	7/8"	P375

Material	Mild Steel	Stainless Steel
	C - .23% max. P - 0.04% max. Mn - 0.90% max. S - 0.05% max.	AISI grade - 302, 304, and 305 standard Other grades available upon request
Mechanical Properties	Tensile - 60,000 psi (min.) Yield - 50,000 psi (min.) Elongation - 20% (in 2 inches)	Values for various grades available upon request
Plating	Plating is not standard. Cadmium, Copper, Nickel and Zinc available upon customer request.	Does not apply to Stainless

To order or specify give: Product Code, Diameter, Length, Material and Quantity

Example: RA SP, 3/16", 7/8", Mild Steel, 1000 pcs.

See **Accessories** for accessory detail and **Ferrule Specifications** for ferrule options.

See **Arc Stud Welding – General Information** and **Technical Details** for industry specifications, thread options, Before Weld (BW) length, flux, raw material details, plating options, annealing, load strengths and shipping weights.



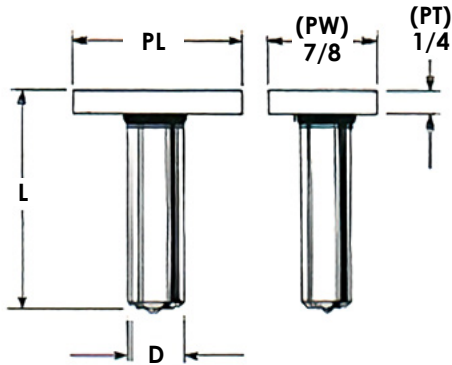
website [www.sunbeltstudwelding.com](http://www.sunbeltstudwelding.com) email [info@sunbeltstudwelding.com](mailto:info@sunbeltstudwelding.com)  
6381 Windfern Road, Houston, TX 77040 telephone 1.800.462.9353 - Houston 713.939.8903 fax 713.939.9013



# Refractory Weld Studs: "T" Plate

## REFRACTORY STUDS: "T" PLATE

Product Code: RA T-PLT



Stud			
D	L Min Length	PL	Ferrule Code
3/8"	1-1/8"	2-1/2"	F375
3/8"	1-1/8"	3"	
1/2"	1-1/8"	2-1/2"	F500
1/2"	1-1/8"	3"	

	Mild Steel	Stainless Steel
Material	C - .23% max. P - 0.04% max. Mn - 0.90% max. S - 0.05% max.	AISI grade - 302, 304, and 305 standard Other grades available upon request
Mechanical Properties	Tensile - 60,000 psi (min.) Yield - 50,000 psi (min.) Elongation - 20% (in 2 inches)	Values for various grades available upon request
Plating	Plating is not standard. Cadmium, Copper, Nickel and Zinc available upon customer request.	Does not apply to Stainless

To order or specify give: Product Code, Diameter: D, Length: L, Plate Length: PL, Material and Quantity  
 Example: RA T-PLT, 3/8, 1-1/8", 2-1/2, Mild Steel, 3000 pcs.

See **Accessories** for accessory detail and **Ferrule Specifications** for ferrule options.

See **Arc Stud Welding – General Information** and **Technical Details** for industry specifications, thread options, Before Weld (BW) length, flux, raw material details, plating options, annealing, load strengths and shipping weights.



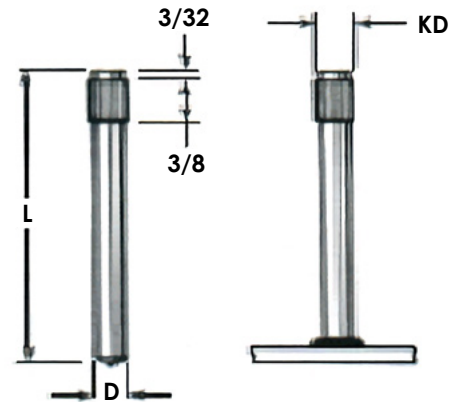
website [www.sunbeltstudwelding.com](http://www.sunbeltstudwelding.com) email [info@sunbeltstudwelding.com](mailto:info@sunbeltstudwelding.com)  
 6381 Windfern Road, Houston, TX 77040 telephone 1.800.462.9353 - Houston 713.939.8903 fax 713.939.9013

# Refractory Weld Studs: Knurled & Refractory Anchor: Drive Plate

## REFRACTORY STUDS: KNURLED

Product Code: RA KNRL

Stud			
D	Min Length	KD	Ferrule Code
5/16"	1"	.327"	F321



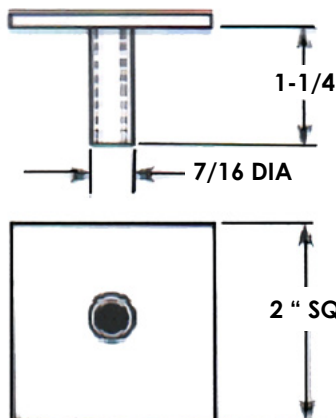
	Mild Steel	Stainless Steel
Material	C - .23% max. P - 0.04% max. Mn - 0.90% max. S - 0.05% max.	AISI grade - 302, 304, 305 and 316 standard Other grades available upon request
Mechanical Properties	Tensile - 60,000 psi (min.) Elongation - 20% (in 2 inches)	Values for various grades available upon request
Plating	Plating is not standard. Cadmium, Copper, Nickel and Zinc available upon customer request.	Does not apply to Stainless

To order or specify give: Product Code, Diameter: D, Length: L, Material and Quantity

Example: RA KNRL, 5/16", 1", Mild Steel, 2500 pcs.

## REFRACTORY ANCHOR: DRIVE PLATE

Product Code: 183-1000-04



Application	Designed to lock on to Sunbelt Stud Welding 5/16" diameter Knurled Studs.
Material	Mild Steel

Drive plate: Sold separately. Not a component part of stud.

To order or specify give: Product Code, Quantity

Example: 183-1000-04, 5/16", 2500 pcs.

See **Accessories** for accessory detail and **Ferrule Specifications** for ferrule options.

See **Arc Stud Welding – General Information** and **Technical Details** for industry specifications, thread options, Before Weld (BW) length, flux, raw material details, plating options, annealing, load strengths and shipping weights.



website [www.sunbeltstudwelding.com](http://www.sunbeltstudwelding.com) email [info@sunbeltstudwelding.com](mailto:info@sunbeltstudwelding.com)  
6381 Windfern Road, Houston, TX 77040 telephone 1.800.462.9353 - Houston 713.939.8903 fax 713.939.9013

# Miscellaneous Refractory Anchors General Specifications

## MISCELLANEOUS REFRACTORY ANCHORS – GENERAL SPECIFICATIONS

<b>Miscellaneous Anchors</b>	<p>This catalog section lists some of the most often used “non-stud-welded” or “miscellaneous” refractory anchors available. The technical representatives at Sunbelt can provide information on the availability of other standard refractory anchors and also assist you in designing a special anchor to meet your refractory fastening requirements.</p>
<b>Materials</b>	<p>Miscellaneous Refractory Anchors are generally available in the following materials:</p> <ol style="list-style-type: none"><li>1. Low Carbon Steel</li><li>2. Stainless Steel – types 304, 310 &amp; 330, and</li><li>3. Inconel 601</li></ol> <p>Other materials are available by special order.</p>
<b>To order or specify</b>	<ol style="list-style-type: none"><li>1. Product Code - RA EJ-000 (found in top-right corner of page)</li><li>2. Dash Number -00 (found in left side column of chart)</li><li>3. Material - (as required)</li></ol> <p>The dimensions shown in the charts represent the most commonly used sizes, however, these refractory anchors can be manufactured to the dimensions required for your application.</p> <p>To order special sizes, replace the Dash Number with – (NS) and give your required dimensions.</p> <p>Example:</p> <ol style="list-style-type: none"><li>1. RA EJ-261</li><li>2. –(NS) A = 3 1/2”, all other dimensions same as (-01)</li><li>3. Stainless Steel 310</li></ol>



## RA EJ-261

Anchor					
Dash Number	A	B	C	D	E
-01	3"	1"	3/16	1/2	1/2
-02	4"	1"	3/16	1/2	1/2
-03	5"	1"	3/16	1/2	1/2
-04	6"	1"	3/16	1/2	1/2
-05	6-3/4"	1"	3/16	1/2	1/2

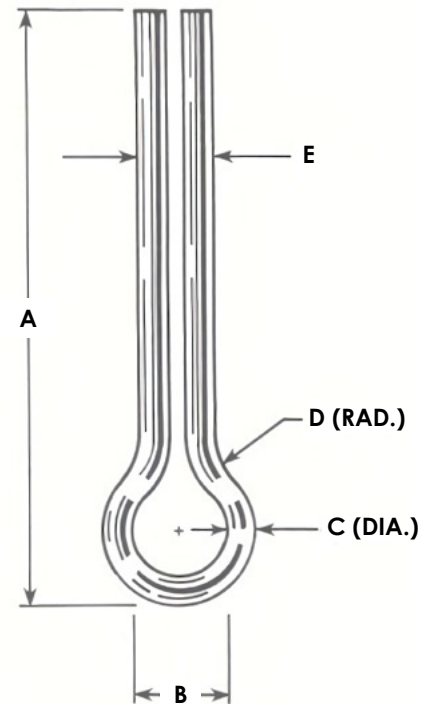
Miscellaneous Refractory Anchors are generally available in the following materials:

1. Low Carbon Steel
2. Stainless Steel – types 304, 310 & 330, and
3. Inconel 601

Other materials are available by special order.

The dimensions shown in the charts represent the most commonly used sizes, however, these refractory anchors can be manufactured to the dimensions required for your application.

To order special sizes, replace the Dash Number with – (NS) and give your required dimensions.



**To order or specify give: Stud Code, Dash Number, Material and Quantity**

**Example: RA EJ-261, -03, Stainless Steel 310, 750 pcs.**

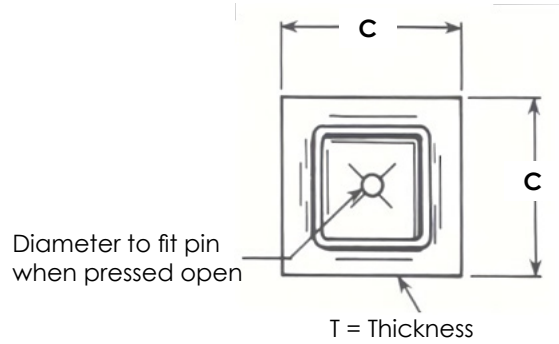
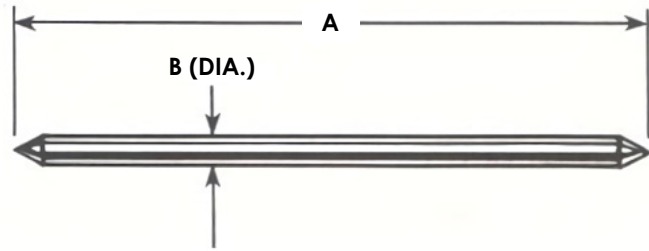
See **Accessories** for accessory detail and **Ferrule Specifications** for ferrule options.

See **Arc Stud Welding – General Information** and **Technical Details** for industry specifications, thread options, Before Weld (BW) length, flux, raw material details, plating options, annealing, load strengths and shipping weights.



# RA EJ-265

## RA EJ-265



Anchor			Washer	
Dash Number	A	B	C	T
-01	2-1/8	1/8	1-1/2	20 GA
-02	4-1/8	1/8	1-1/2	20 GA
-03	2-1/8	3/16	1-1/2	20 GA
-04	4-1/8	3/16	1-1/2	20 GA
-05	2-1/8	1/4	2-1/2	20 GA
-06	4-1/8	1/4	2-1/2	20 GA
-07	5"	10 GA	1-1/2	20 GA
-08	3"	3/16	1-1/2	20 GA
-09	2-5/8	10 GA	1-1/2	20 GA
-10	4-5/8	1/8	1-1/2	20 GA

Miscellaneous Refractory Anchors are generally available in the following materials:

1. Low Carbon Steel
  2. Stainless Steel – types 304, 310 & 330, and
  3. Inconel 601
- Other materials are available by special order.

The dimensions shown in the charts represent the most commonly used sizes, however, these refractory anchors can be manufactured to the dimensions required for your application.

To order special sizes, replace the Dash Number with – (NS) and give your required dimensions.

**To order or specify give: Stud Code, Dash Number, Material and Quantity**

**Example: RA EJ-265, -02, Stainless Steel 310, 750 pcs.**

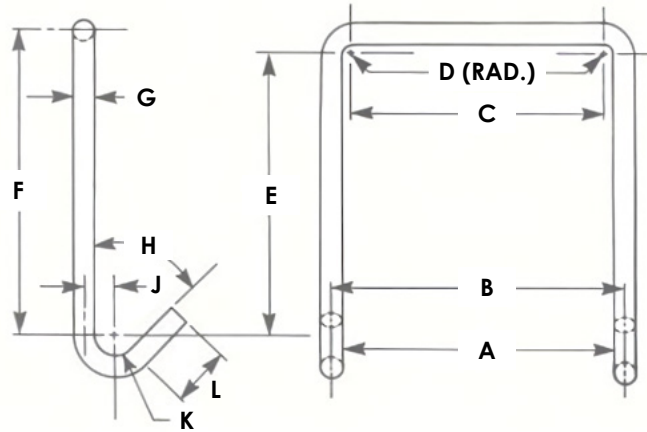
See **Accessories** for accessory detail and **Ferrule Specifications** for ferrule options.

See **Arc Stud Welding – General Information** and **Technical Details** for industry specifications, thread options, Before Weld (BW) length, flux, raw material details, plating options, annealing, load strengths and shipping weights.



website [www.sunbeltstudwelding.com](http://www.sunbeltstudwelding.com) email [info@sunbeltstudwelding.com](mailto:info@sunbeltstudwelding.com)  
6381 Windfern Road, Houston, TX 77040 telephone 1.800.462.9353 - Houston 713.939.8903 fax 713.939.9013

## RA EJ-268



Anchor											
Dash Number	A	B	C	D	E	F	G	H	J	K	L
-01	3-5/16	3-9/16	3-1/16	1/8	3-7/16	3-11/16	1/4	45°	3/8	1/4	3/4
-02	3-3/16	3-7/16	2-15/16	1/8	4-1/2	4-3/4	1/4	60°	1/4	1/8	3/4
-03	3-5/8	4"	3"	5/16	4-3/16	4-11/16	3/8	60°	1/2	5/16	3/4

Miscellaneous Refractory Anchors are generally available in the following materials:

1. Low Carbon Steel
2. Stainless Steel – types 304, 310 & 330, and
3. Inconel 601

Other materials are available by special order.

The dimensions shown in the charts represent the most commonly used sizes, however, these refractory anchors can be manufactured to the dimensions required for your application.

To order special sizes, replace the Dash Number with – (NS) and give your required dimensions.

**To order or specify give: Stud Code, Dash Number, Material and Quantity**

**Example: RA EJ-268, -03, Stainless Steel 310, 750 pcs.**

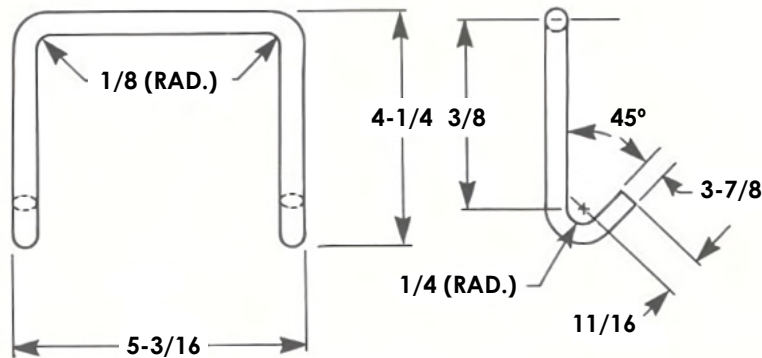
See **Accessories** for accessory detail and **Ferrule Specifications** for ferrule options.

See **Arc Stud Welding – General Information** and **Technical Details** for industry specifications, thread options, Before Weld (BW) length, flux, raw material details, plating options, annealing, load strengths and shipping weights.



# RA EJ-269

## RA EJ-269



Anchor	
Dash Number	Dimensions
-01	(see above)

Miscellaneous Refractory Anchors are generally available in the following materials:

1. Low Carbon Steel
2. Stainless Steel – types 304, 310 & 330, and
3. Inconel 601

Other materials are available by special order.

The dimensions shown in the charts represent the most commonly used sizes, however, these refractory anchors can be manufactured to the dimensions required for your application.

To order special sizes, replace the Dash Number with – (NS) and give your required dimensions.

**To order or specify give: Stud Code, Dash Number, Material and Quantity**

**Example: RA EJ-269, -01, Stainless Steel 310, 750 pcs.**

See **Accessories** for accessory detail and **Ferrule Specifications** for ferrule options.

See **Arc Stud Welding – General Information** and **Technical Details** for industry specifications, thread options, Before Weld (BW) length, flux, raw material details, plating options, annealing, load strengths and shipping weights.

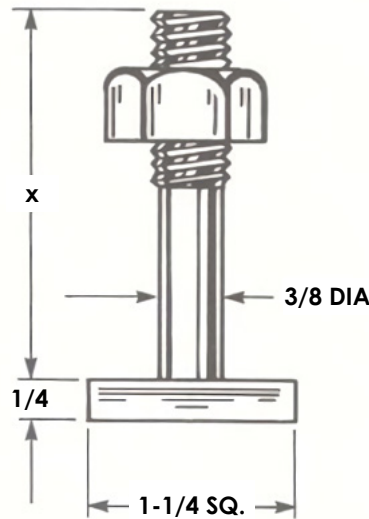


website [www.sunbeltstudwelding.com](http://www.sunbeltstudwelding.com) email [info@sunbeltstudwelding.com](mailto:info@sunbeltstudwelding.com)  
6381 Windfern Road, Houston, TX 77040 telephone 1.800.462.9353 - Houston 713.939.8903 fax 713.939.9013



# RA EJ-270

## RA EJ-270



Anchor							
Dash Number	X	Number	X	Dash Number	X	Number	X
-01	2	17	6	-09	4	25	8
-02	2-1/4	18	6-1/4	-10	4-1/4	26	8-1/4
-03	2-1/2	19	6-1/2	-11	4-1/2	27	8-1/2
-04	2-3/4	20	6-3/4	-12	4-3/4	28	8-3/4
-05	3	21	7	-13	5	29	9
-06	3-1/4	22	7-1/4	-14	5-1/4	30	9-1/4
-07	3-1/2	23	7-1/2	-15	5-1/2	31	9-1/2
-08	3-3/4	24	7-3/4	-16	5-3/4	32	9-3/4

Miscellaneous Refractory Anchors are generally available in the following materials:

1. Low Carbon Steel
  2. Stainless Steel – types 304, 310 & 330, and
  3. Inconel 601
- Other materials are available by special order.

The dimensions shown in the charts represent the most commonly used sizes, however, these refractory anchors can be manufactured to the dimensions required for your application.

To order special sizes, replace the Dash Number with – (NS) and give your required dimensions.

**To order or specify give: Stud Code, Dash Number, Material and Quantity**

**Example: RA EJ-270, -05, Stainless Steel 310, 750 pcs.**

See **Accessories** for accessory detail and **Ferrule Specifications** for ferrule options.

See **Arc Stud Welding – General Information** and **Technical Details** for industry specifications, thread options, Before Weld (BW) length, flux, raw material details, plating options, annealing, load strengths and shipping weights.

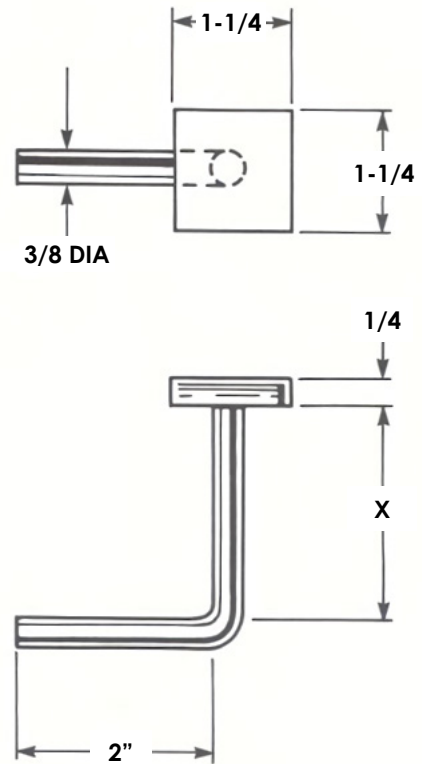


website [www.sunbeltstudwelding.com](http://www.sunbeltstudwelding.com) email [info@sunbeltstudwelding.com](mailto:info@sunbeltstudwelding.com)  
 6381 Windfern Road, Houston, TX 77040 telephone 1.800.462.9353 - Houston 713.939.8903 fax 713.939.9013



## RA EJ-271

Anchor			
Dash Number	Dimension X	Dash Number	Dimension X
-01	1-9/16	-18	5-13/16
-02	1-13/16	-19	6-1/16
-03	2-1/16	-20	6-5/16
-04	2-5/16	-21	6-9/16
-05	2-9/16	-22	6-13/16
-06	2-13/16	-23	7-1/16
-07	3-1/16	-24	7-5/16
-08	3-5/16	-25	7-9/16
-09	3-9/16	-26	7-13/16
-10	3-13/16	-27	8-1/16
-11	4-1/16	-28	8-5/16
-12	4-5/16	-29	8-9/16
-13	4-9/16	-30	8-13/16
-14	4-13/16	-31	9-1/16
-15	5-1/16	-32	9-5/16
-16	5-5/16	-33	9-9/16
-17	5-9/16	-34	9-13/16



Miscellaneous Refractory Anchors are generally available in the following materials:

1. Low Carbon Steel
2. Stainless Steel – types 304, 310 & 330, and
3. Inconel 601

Other materials are available by special order.

The dimensions shown in the charts represent the most commonly used sizes, however, these refractory anchors can be manufactured to the dimensions required for your application.

To order special sizes, replace the Dash Number with – (NS) and give your required dimensions.

**To order or specify give: Stud Code, Dash Number, Material and Quantity**

**Example: RA EJ-271, -09, Stainless Steel 310, 750 pcs.**

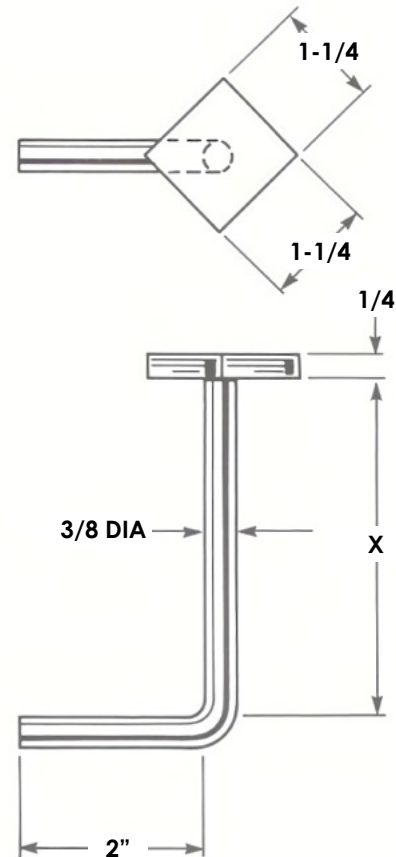
See **Accessories** for accessory detail and **Ferrule Specifications** for ferrule options.

See **Arc Stud Welding – General Information** and **Technical Details** for industry specifications, thread options, Before Weld (BW) length, flux, raw material details, plating options, annealing, load strengths and shipping weights.



## RA EJ-272

Anchor			
Dash Number	Dimension X	Dash Number	Dimension X
-01	1-1/16	-18	5-5/16
-02	1-5/16	-19	5-9/16
-03	1-9/16	-20	5-13/16
-04	1-13/16	-21	6-1/16
-05	2-1/16	-22	6-5/16
-06	2-5/16	-23	6-9/16
-07	2-9/16	-24	6-13/16
-08	2-13/16	-25	7-1/16
-09	3-1/16	-26	7-5/16
-10	3-5/16	-27	7-9/16
-11	3-9/16	-28	7-13/16
-12	3-13/16	-29	8-1/16
-13	4-1/16	-30	8-5/16
-14	4-5/16	-31	8-9/16
-15	4-9/16	-32	8-13/16
-16	4-13/16	-33	9-1/16
-17	5-1/16		



Miscellaneous Refractory Anchors are generally available in the following materials:

1. Low Carbon Steel
  2. Stainless Steel – types 304, 310 & 330, and
  3. Inconel 601
- Other materials are available by special order.

The dimensions shown in the charts represent the most commonly used sizes, however, these refractory anchors can be manufactured to the dimensions required for your application.

To order special sizes, replace the Dash Number with – (NS) and give your required dimensions.

**To order or specify give: Stud Code, Dash Number, Material and Quantity**

**Example: RA EJ-272, -12, Stainless Steel 310, 750 pcs.**

See **Accessories** for accessory detail and **Ferrule Specifications** for ferrule options.

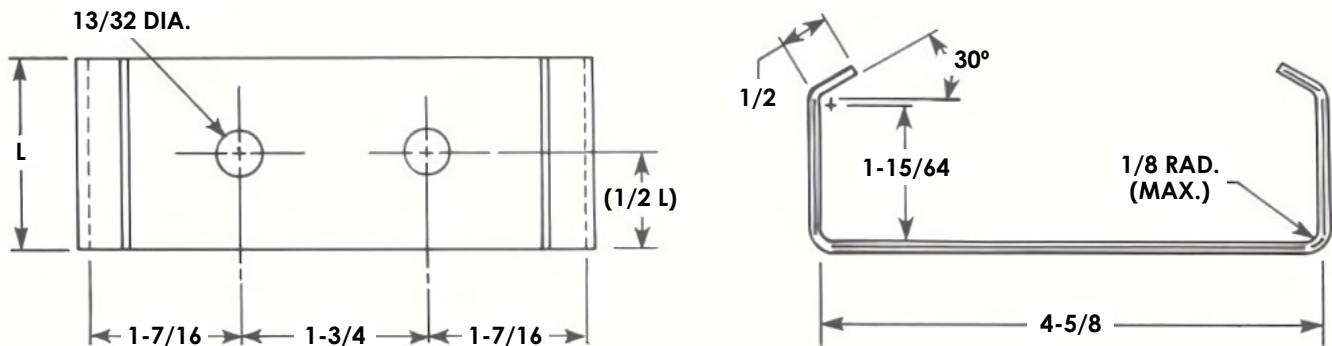
See **Arc Stud Welding – General Information** and **Technical Details** for industry specifications, thread options, Before Weld (BW) length, flux, raw material details, plating options, annealing, load strengths and shipping weights.



website [www.sunbeltstudwelding.com](http://www.sunbeltstudwelding.com) email [info@sunbeltstudwelding.com](mailto:info@sunbeltstudwelding.com)  
 6381 Windfern Road, Houston, TX 77040 telephone 1.800.462.9353 - Houston 713.939.8903 fax 713.939.9013

# RA EJ-273

## RA EJ-273



Anchor			
Dash Number	Thickness	L (Inches)	Steel Type
-01	3 GA.	2-1/2	CARBON
-02	11 GA.	2-1/2	CARBON
-03	3 GA.	1-1/2	304 SS
-04	11 GA.	1-1/2	304 SS
-05	3 GA.	1-1/2	309 SS
-06	11 GA.	1-1/2	309 SS
-07	3 GA.	1-1/2	310 SS
-08	11 GA.	1-1/2	310 SS
-09	3 GA.	1-1/2	316 SS
-10	11 GA.	1-1/2	316 SS

Miscellaneous Refractory Anchors are generally available in the following materials:

1. Low Carbon Steel
  2. Stainless Steel – types 304, 310 & 330, and
  3. Inconel 601
- Other materials are available by special order.

The dimensions shown in the charts represent the most commonly used sizes, however, these refractory anchors can be manufactured to the dimensions required for your application.

To order special sizes, replace the Dash Number with – (NS) and give your required dimensions.

**To order or specify give: Stud Code, Dash Number, Material and Quantity**

**Example: RA EJ-273, -04, Stainless Steel 310, 750 pcs.**

See **Accessories** for accessory detail and **Ferrule Specifications** for ferrule options.

See **Arc Stud Welding – General Information** and **Technical Details** for industry specifications, thread options, Before Weld (BW) length, flux, raw material details, plating options, annealing, load strengths and shipping weights.



website [www.sunbeltstudwelding.com](http://www.sunbeltstudwelding.com) email [info@sunbeltstudwelding.com](mailto:info@sunbeltstudwelding.com)  
 6381 Windfern Road, Houston, TX 77040 telephone 1.800.462.9353 - Houston 713.939.8903 fax 713.939.9013

# RA EJ-276

## RA EJ-276

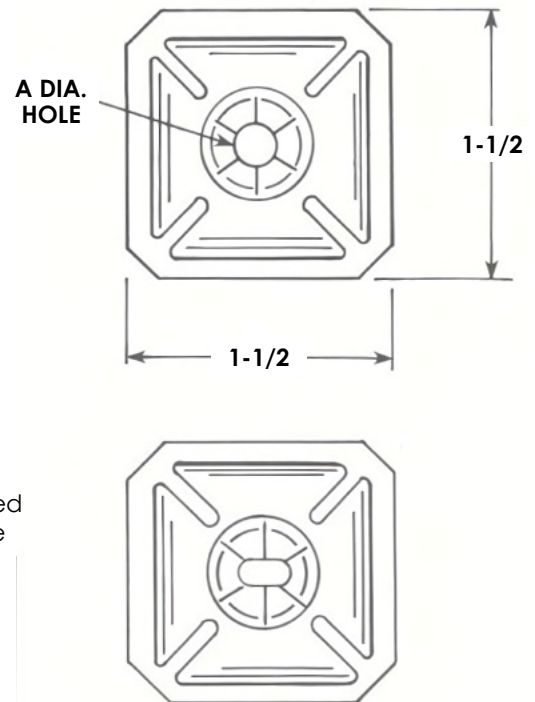
Washer		
Dash Number	A	Product Code*
-01	1/4"	WCN K150S B 1/4
-02	3/16"	WCN K150SB 3/16
-03	UL**	WCN K150SB (IT)

Miscellaneous Refractory Anchors are generally available in the following materials:

1. Low Carbon Steel
  2. Stainless Steel – types 304, 310 & 330, and
  3. Inconel 601
- Other materials are available by special order.

The dimensions shown in the charts represent the most commonly used sizes, however, these refractory anchors can be manufactured to the dimensions required for your application.

To order special sizes, replace the Dash Number with – (NS) and give your required dimensions.



**To order or specify give: Stud Code, Dash Number, Material and Quantity**

**Example: RA EJ-276, -01, Stainless Steel 310, 750 pcs.**

See **Accessories** for accessory detail and **Ferrule Specifications** for ferrule options.

See **Arc Stud Welding – General Information** and **Technical Details** for industry specifications, thread options, Before Weld (BW) length, flux, raw material details, plating options, annealing, load strengths and shipping weights.

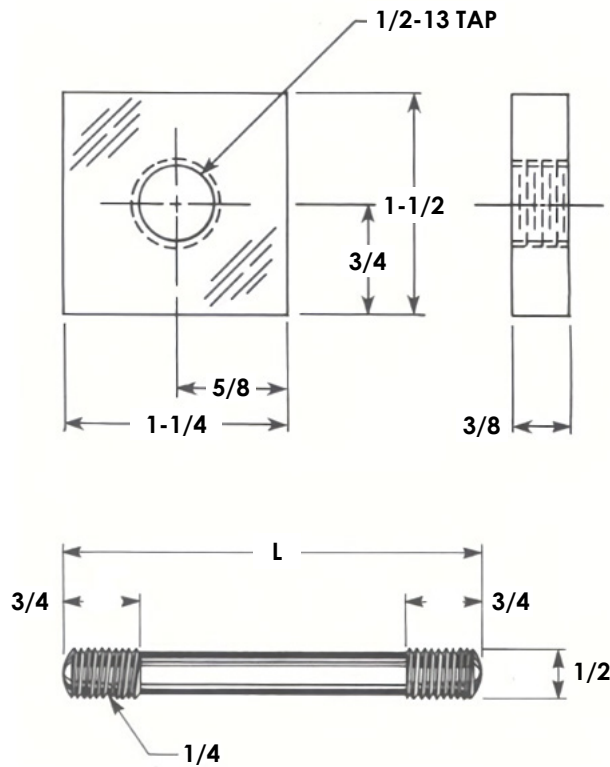


website [www.sunbeltstudwelding.com](http://www.sunbeltstudwelding.com) email [info@sunbeltstudwelding.com](mailto:info@sunbeltstudwelding.com)  
 6381 Windfern Road, Houston, TX 77040 telephone 1.800.462.9353 - Houston 713.939.8903 fax 713.939.9013

# RA EJ-353

## RA EJ-353

Plate	
As shown	
Anchor	
Length	As required



Miscellaneous Refractory Anchors are generally available in the following materials:

1. Low Carbon Steel
  2. Stainless Steel – types 304, 310 & 330, and
  3. Inconel 601
- Other materials are available by special order.

The dimensions shown in the charts represent the most commonly used sizes, however, these refractory anchors can be manufactured to the dimensions required for your application.

To order special sizes, replace the Dash Number with – (NS) and give your required dimensions.

**To order or specify give: Stud Code, Length, Dash Number, Material and Quantity**

**Example: RA EJ-353, 1", -01, Stainless Steel 310, 750 pcs.**

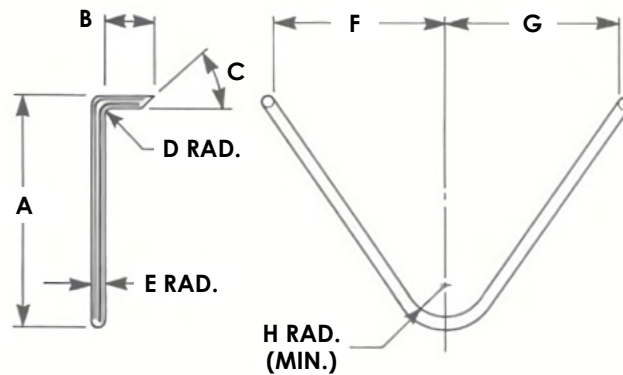
See **Accessories** for accessory detail and **Ferrule Specifications** for ferrule options.

See **Arc Stud Welding – General Information** and **Technical Details** for industry specifications, thread options, Before Weld (BW) length, flux, raw material details, plating options, annealing, load strengths and shipping weights.



website [www.sunbeltstudwelding.com](http://www.sunbeltstudwelding.com) email [info@sunbeltstudwelding.com](mailto:info@sunbeltstudwelding.com)  
 6381 Windfern Road, Houston, TX 77040 telephone 1.800.462.9353 - Houston 713.939.8903 fax 713.939.9013

## RA EJ-611



Anchor								
Number	A	B	C	D	E	F	G	H
-01	1-1/2	3/4	45°	1/8	1/8	2-1/4	2-1/4	5/8
-02	2-1/4	3/4	45°	1/8	1/8	2-1/4	2-1/4	5/8
-03	3-1/4	3/4	45°	1/8	1/8	2-1/4	2-1/4	5/8
-04	4-1/4	3/4	45°	1/8	1/8	2-1/4	2-1/4	5/8
-05	5-1/4	3/4	45°	1/8	1/8	2-1/4	2-1/4	5/8
-06	3-5/16	7/8	45°	1/8	1/8	2-1/4	2-1/4	5/8
-07	4-11/16	7/8	45°	1/8	1/8	2-1/4	2-1/4	5/8

Miscellaneous Refractory Anchors are generally available in the following materials:

1. Low Carbon Steel
  2. Stainless Steel – types 304, 310 & 330, and
  3. Inconel 601
- Other materials are available by special order.

The dimensions shown in the charts represent the most commonly used sizes, however, these refractory anchors can be manufactured to the dimensions required for your application.

To order special sizes, replace the Dash Number with – (NS) and give your required dimensions.

**To order or specify give: Stud Code, Dash Number, Material and Quantity**  
**Example: RA EJ-611, -04, Stainless Steel 310, 750 pcs.**

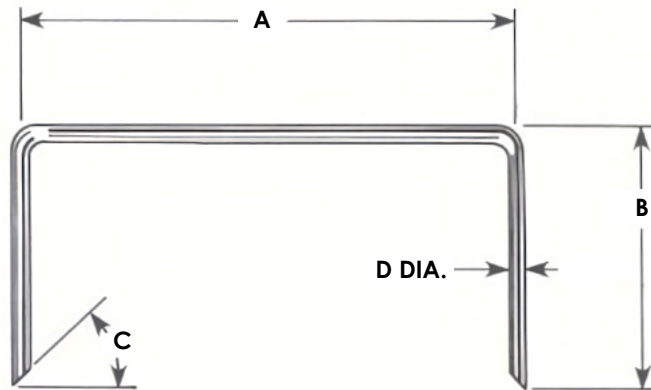
See **Accessories** for accessory detail and **Ferrule Specifications** for ferrule options.

See **Arc Stud Welding – General Information** and **Technical Details** for industry specifications, thread options, Before Weld (BW) length, flux, raw material details, plating options, annealing, load strengths and shipping weights.



# RA EJ-612

## RA EJ-612



Anchor				
Dash Number	A	B	C	D
-01	2-1/2	2-1/4	45°	1/8
-02	4-1/2	2-1/4	45°	1/8

Miscellaneous Refractory Anchors are generally available in the following materials:

1. Low Carbon Steel
  2. Stainless Steel – types 304, 310 & 330, and
  3. Inconel 601
- Other materials are available by special order.

The dimensions shown in the charts represent the most commonly used sizes, however, these refractory anchors can be manufactured to the dimensions required for your application.

To order special sizes, replace the Dash Number with – (NS) and give your required dimensions.

**To order or specify give: Stud Code, Dash Number, Material and Quantity**

**Example: RA EJ-612, -01, Stainless Steel 310, 750 pcs.**

See **Accessories** for accessory detail and **Ferrule Specifications** for ferrule options.

See **Arc Stud Welding – General Information** and **Technical Details** for industry specifications, thread options, Before Weld (BW) length, flux, raw material details, plating options, annealing, load strengths and shipping weights.

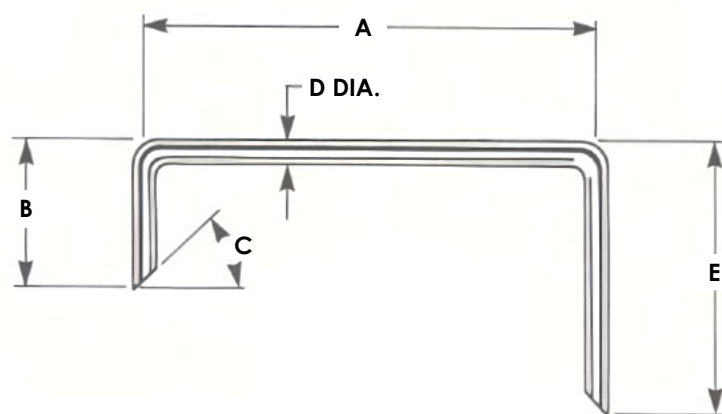


website [www.sunbeltstudwelding.com](http://www.sunbeltstudwelding.com) email [info@sunbeltstudwelding.com](mailto:info@sunbeltstudwelding.com)  
6381 Windfern Road, Houston, TX 77040 telephone 1.800.462.9353 - Houston 713.939.8903 fax 713.939.9013



# RA EJ-613

## RA EJ-613



Anchor					
Dash Number	A	B	C	D	E
-01	3	1-1/4	45°	3/16	2-1/4
-02	4	1-1/4	45°	3/16	2-1/4
-03	5	1-1/4	45°	3/16	2-1/4
-04	5-1/2	1-1/4	45°	3/16	2-1/4

Miscellaneous Refractory Anchors are generally available in the following materials:

1. Low Carbon Steel
2. Stainless Steel – types 304, 310 & 330, and
3. Inconel 601

Other materials are available by special order.

The dimensions shown in the charts represent the most commonly used sizes, however, these refractory anchors can be manufactured to the dimensions required for your application.

To order special sizes, replace the Dash Number with – (NS) and give your required dimensions.

**To order or specify give: Stud Code, Dash Number, Material and Quantity**

**Example: RA EJ-613, -03, Stainless Steel 310, 750 pcs.**

See **Accessories** for accessory detail and **Ferrule Specifications** for ferrule options.

See **Arc Stud Welding – General Information** and **Technical Details** for industry specifications, thread options, Before Weld (BW) length, flux, raw material details, plating options, annealing, load strengths and shipping weights.

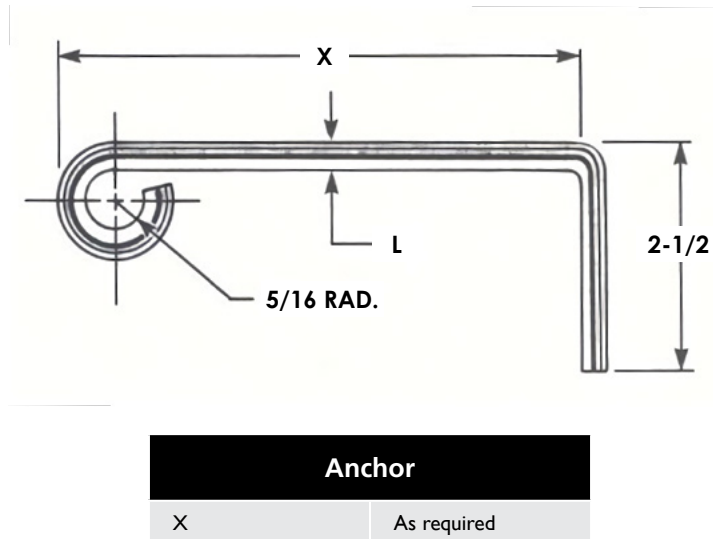


website [www.sunbeltstudwelding.com](http://www.sunbeltstudwelding.com) email [info@sunbeltstudwelding.com](mailto:info@sunbeltstudwelding.com)  
6381 Windfern Road, Houston, TX 77040 telephone 1.800.462.9353 - Houston 713.939.8903 fax 713.939.9013



# RA EJ-614

## RA EJ-614



Miscellaneous Refractory Anchors are generally available in the following materials:

1. Low Carbon Steel
2. Stainless Steel – types 304, 310 & 330, and
3. Inconel 601

Other materials are available by special order.

The dimensions shown in the charts represent the most commonly used sizes, however, these refractory anchors can be manufactured to the dimensions required for your application.

To order special sizes, replace the Dash Number with – (NS) and give your required dimensions.

**To order or specify give: Stud Code, X, Material and Quantity**

**Example: RA EJ-614, 1", Stainless Steel 310, 750 pcs.**

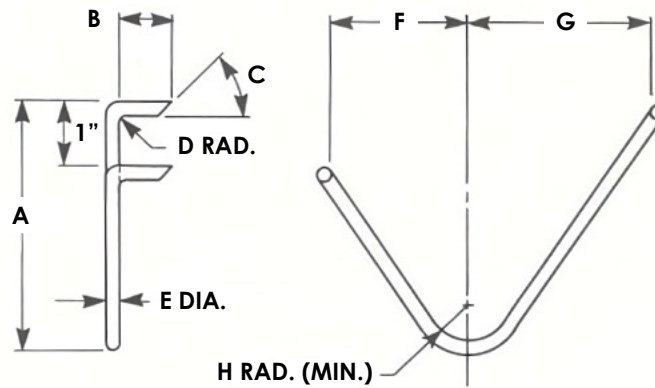
See **Accessories** for accessory detail and **Ferrule Specifications** for ferrule options.

See **Arc Stud Welding – General Information** and **Technical Details** for industry specifications, thread options, Before Weld (BW) length, flux, raw material details, plating options, annealing, load strengths and shipping weights.



# RA EJ-615

## RA EJ-615



Anchor								
Dash Number	A	B	C	D	E	F	G	H
-01	1-1/2	3/4	45°	1/8	1/8	1-5/8	2-1/4	5/8
-02	2-1/4	3/4	45°	1/8	1/8	1-5/8	2-1/4	5/8
-03	3-1/4	3/4	45°	1/8	1/8	1-5/8	2-1/4	5/8
-04	4-1/4	3/4	45°	1/8	1/8	1-5/8	2-1/4	5/8
-05	5-1/4	3/4	45°	1/8	1/8	1-5/8	2-1/4	5/8
-06	3-5/16	7/8	45°	1/8	1/8	1-5/8	2-1/4	5/8
-07	4-11/16	7/8	45°	1/8	1/8	1-5/8	2-1/4	5/8

To order or specify give: Stud Code, Dash Number, Material and Quantity

Example: RA EJ-615, -03, Stainless Steel 310, 750 pcs.

See **Accessories** for accessory detail and **Ferrule Specifications** for ferrule options.

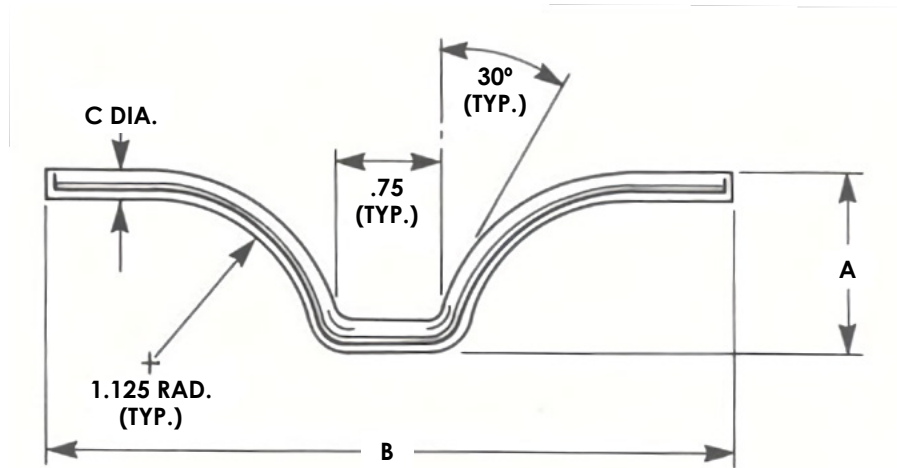
See **Arc Stud Welding – General Information** and **Technical Details** for industry specifications, thread options, Before Weld (BW) length, flux, raw material details, plating options, annealing, load strengths and shipping weights.



website [www.sunbeltstudwelding.com](http://www.sunbeltstudwelding.com) email [info@sunbeltstudwelding.com](mailto:info@sunbeltstudwelding.com)  
 6381 Windfern Road, Houston, TX 77040 telephone 1.800.462.9353 - Houston 713.939.8903 fax 713.939.9013

# RA EJ-730

## RA EJ-730



Anchor							
Dash Number	A	B	C	Dash Number	A	B	C
-01	1	4.73	3/16	-12	1	4.73	1/4
-02	1.5	5.30	3/16	-13	1.5	5.30	1/4
-03	2	5.88	3/16	-14	2	5.88	1/4
-04	2.5	6.45	3/16	-15	2.5	6.45	1/4
-05	3	7.03	3/16	-16	3	7.03	1/4
-06	3.5	7.61	3/16	-17	3.5	7.61	1/4
-07	4	8.18	3/16	-18	4	8.18	1/4
-08	4.5	8.76	3/16	-19	4.5	8.76	1/4
-09	5	9.33	3/16	-20	5	9.33	1/4
-10	5.5	9.91	3/16	-21	5.5	9.91	1/4
-11	6	10.4	3/16	-22	6	10.4	1/4

To order or specify give: Stud Code, Dash Number, Material and Quantity

Example: RA EJ-730, -01, Stainless Steel 310, 750 pcs.

See **Accessories** for accessory detail and **Ferrule Specifications** for ferrule options.

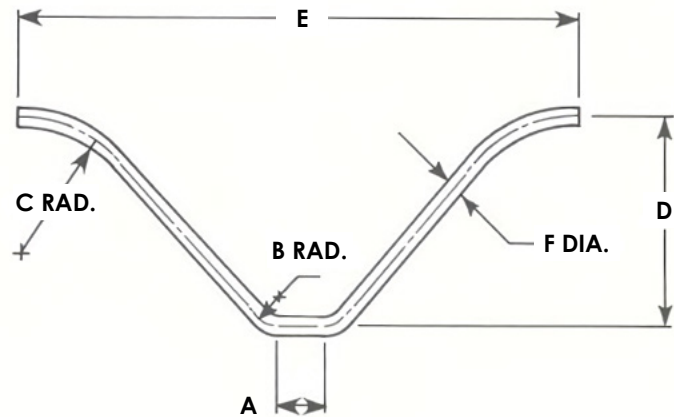
See **Arc Stud Welding – General Information** and **Technical Details** for industry specifications, thread options, Before Weld (BW) length, flux, raw material details, plating options, annealing, load strengths and shipping weights.



website [www.sunbeltstudwelding.com](http://www.sunbeltstudwelding.com) email [info@sunbeltstudwelding.com](mailto:info@sunbeltstudwelding.com)  
 6381 Windfern Road, Houston, TX 77040 telephone 1.800.462.9353 - Houston 713.939.8903 fax 713.939.9013

# RA EJ-731

## RA EJ-731



Anchor						
Dash Number	A	B	C	D	E	F
-01	7/16	5/16	1-3/8	3/4	5-3/4	3/16
-02	7/16	5/16	1-3/8	1	5-3/4	3/16
-03	7/16	5/16	1-3/8	1-1/2	5-3/4	3/16
-04	7/16	5/16	1-3/8	2	5-3/4	3/16
-05	7/16	5/16	1-3/8	2-1/4	5-3/4	3/16
-06	1/2	1/2	1-1/2	2-1/2	6	3/16
-07	1/2	1/2	2-1/4	3	7	3/16
-08	1/2	1/2	1-1/2	3-1/2	6	3/16
-09	1/2	1/2	2-1/4	3-1/2	7-3/4	3/16
-10	3/4	3/4	2	3-3/4	8	3/16
-11	1/2	1/2	2-1/4	4-1/2	8	3/16
-12	3/4	3/4	2-1/4	5	9-15/16	3/16
-13	3/4	3/4	2	3-3/4	8	1/4
-14	3/4	3/4	2	4	8	1/4
-15	3/4	3/4	2-1/2	4-1/2	8-1/2	1/4
-16	3/4	3/4	4	6	11-1/2	5/16

To order or specify give: Stud Code, Dash Number, Material and Quantity

Example: RA EJ-731, -09, Stainless Steel 310, 750 pcs.

See **Accessories** for accessory detail and **Ferrule Specifications** for ferrule options.

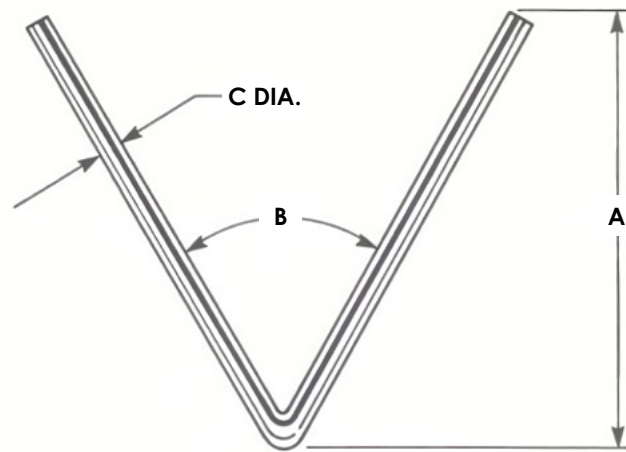
See **Arc Stud Welding – General Information** and **Technical Details** for industry specifications, thread options, Before Weld (BW) length, flux, raw material details, plating options, annealing, load strengths and shipping weights.



website [www.sunbeltstudwelding.com](http://www.sunbeltstudwelding.com) email [info@sunbeltstudwelding.com](mailto:info@sunbeltstudwelding.com)  
 6381 Windfern Road, Houston, TX 77040 telephone 1.800.462.9353 - Houston 713.939.8903 fax 713.939.9013

# RA EJ-732

## RA EJ-732



Anchor			
Dash Number	A	B	C
-01	1	60°	3/16
-02	1-1/2	60°	3/16
-03	2	60°	3/16
-04	3	60°	3/16
-05	4	60°	3/16
-06	5	60°	3/16
-07	6	60°	3/16

To order or specify give: Stud Code, Dash Number, Material and Quantity  
 Example: RA EJ-732, -05, Stainless Steel 310, 750 pcs.

See **Accessories** for accessory detail and **Ferrule Specifications** for ferrule options.

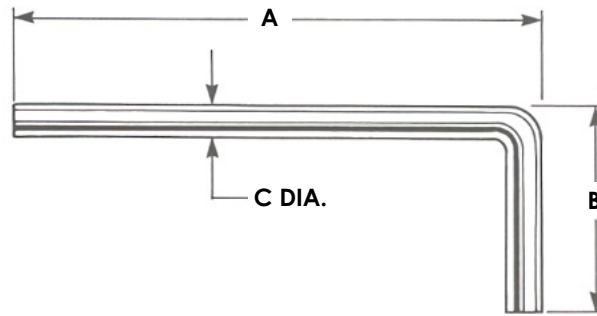
See **Arc Stud Welding – General Information** and **Technical Details** for industry specifications, thread options, Before Weld (BW) length, flux, raw material details, plating options, annealing, load strengths and shipping weights.



website [www.sunbeltstudwelding.com](http://www.sunbeltstudwelding.com) email [info@sunbeltstudwelding.com](mailto:info@sunbeltstudwelding.com)  
 6381 Windfern Road, Houston, TX 77040 telephone 1.800.462.9353 - Houston 713.939.8903 fax 713.939.9013

# RA EJ-733

## RA EJ-733



Anchor							
Dash Number	A	B	C	Dash Number	A	B	C
-01	1	1-1/2	3/16	-19	1	1-1/2	1/4
-02	1-1/2	1-1/2	3/16	-20	1-1/2	1-1/2	1/4
-03	1-3/4	1-1/2	3/16	-21	1-3/4	1-1/2	1/4
-04	2	1-1/2	3/16	-22	2	1-1/2	1/4
-05	2-1/2	1-1/2	3/16	-23	2-1/2	1-1/2	1/4
-06	3	1-1/2	3/16	-24	3	1-1/2	1/4
-07	4	1-1/2	3/16	-25	4	1-1/2	1/4
-08	4-1/2	1-1/2	3/16	-26	4-1/2	1-1/2	1/4
-09	5	1-1/2	3/16	-27	5	1-1/2	1/4
-10	5-1/2	1-1/2	3/16	-28	5-1/2	1-1/2	1/4
-11	6	1-1/2	3/16	-29	6	1-1/2	1/4
-12	6-1/2	1-1/2	3/16	-30	6-1/2	1-1/2	1/4
-13	7	1-1/2	3/16	-31	7	1-1/2	1/4
-14	7-1/2	1-1/2	3/16	-32	7-1/2	1-1/2	1/4
-15	7-3/4	1-1/2	3/16	-33	7-3/4	1-1/2	1/4
-16	8-1/2	1-1/2	3/16	-34	8-1/2	1-1/2	1/4
-17	9	1-1/2	3/16	-35	9	1-1/2	1/4
-18	9-1/2	1-1/2	3/16	-36	9-1/2	1-1/2	1/4

To order or specify give: Stud Code, Dash Number, Material and Quantity

Example: RA EJ-733, -05, Stainless Steel 310, 750 pcs.

See **Accessories** for accessory detail and **Ferrule Specifications** for ferrule options.

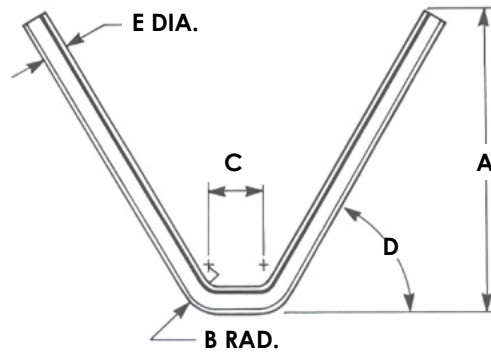
See **Arc Stud Welding – General Information** and **Technical Details** for industry specifications, thread options, Before Weld (BW) length, flux, raw material details, plating options, annealing, load strengths and shipping weights.



website [www.sunbeltstudwelding.com](http://www.sunbeltstudwelding.com) email [info@sunbeltstudwelding.com](mailto:info@sunbeltstudwelding.com)  
 6381 Windfern Road, Houston, TX 77040 telephone 1.800.462.9353 - Houston 713.939.8903 fax 713.939.9013

# RA EJ-734

## RA EJ-734



Anchor					
Dash Number	A	B	C	D	E
-01	2	3/4	3/4	60°	1/8
-02	3	3/4	3/4	60°	1/8
-03	6-1/2	3/4	3/4	60°	1/8
-04	1-1/2	3/4	3/4	60°	3/16
-05	2	3/4	3/4	60°	3/16
-06	2-1/4	3/4	3/4	60°	3/16
-07	2-3/4	3/4	3/4	60°	3/16
-08	3-3/4	3/4	3/4	60°	3/16
-09	4-1/2	3/4	3/4	60°	3/16
-10	5-1/2	3/4	3/4	60°	3/16
-11	6-1/2	3/4	3/4	60°	3/16
-12	1-1/2	3/4	3/4	60°	1/4
-13	2-1/4	3/4	3/4	60°	1/4
-14	2-3/4	3/4	3/4	60°	1/4
-15	3-3/4	3/4	3/4	60°	1/4
-16	4-1/2	3/4	3/4	60°	1/4
-17	5-1/2	3/4	3/4	60°	1/4
-18	6-1/2	3/4	3/4	60°	1/4

To order or specify give: Stud Code, Dash Number, Material and Quantity

Example: RA EJ-734, -01, Stainless Steel 310, 750 pcs.

See **Accessories** for accessory detail and **Ferrule Specifications** for ferrule options.

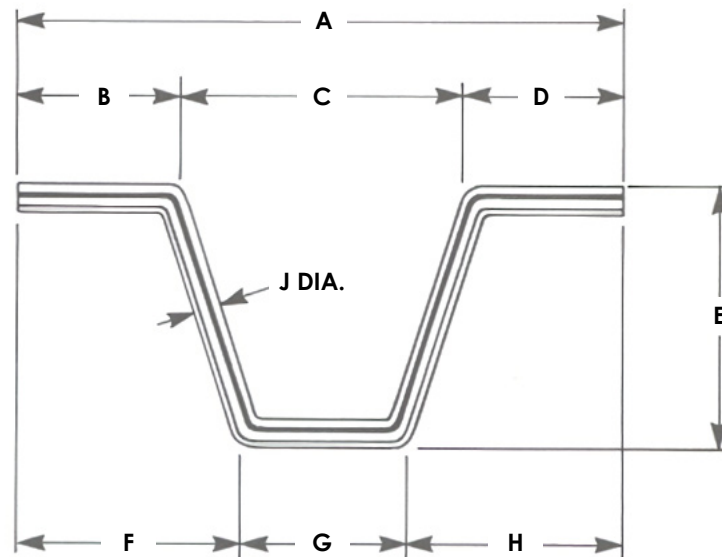
See **Arc Stud Welding – General Information** and **Technical Details** for industry specifications, thread options, Before Weld (BW) length, flux, raw material details, plating options, annealing, load strengths and shipping weights.



website [www.sunbeltstudwelding.com](http://www.sunbeltstudwelding.com) email [info@sunbeltstudwelding.com](mailto:info@sunbeltstudwelding.com)  
 6381 Windfern Road, Houston, TX 77040 telephone 1.800.462.9353 - Houston 713.939.8903 fax 713.939.9013

# RA EJ-735

## RA EJ-735



Anchor									
Dash Number	A	B	C	D	E	F	G	H	J
-01	6	1-1/2	3	1-1/2	2-1/4	2-1/4	1-1/2	2-1/4	3/16
-02	6	1-1/2	3	1-1/2	3-1/4	2-1/4	1-1/2	2-1/4	3/16
-03	6	1-1/2	3	1-1/2	3-1/2	2-1/4	1-1/2	2-1/4	3/16
-04	6	1-1/2	3	1-1/2	5	2-1/4	1-1/2	2-1/4	3/16
-05	6	1-1/2	3	1-1/2	6-1/4	2-1/4	1-1/2	2-1/4	3/16
-06	6	1-1/2	3	1-1/2	8-1/2	2-1/4	1-1/2	2-1/4	3/16
-07	7	1-3/4	3-1/2	1-3/4	3-1/2	2-3/4	1-1/2	2-3/4	3/16

To order or specify give: Stud Code, Dash Number, Material and Quantity

Example: RA EJ-735, -01, Stainless Steel 310, 750 pcs.

See **Accessories** for accessory detail and **Ferrule Specifications** for ferrule options.

See **Arc Stud Welding – General Information** and **Technical Details** for industry specifications, thread options, Before Weld (BW) length, flux, raw material details, plating options, annealing, load strengths and shipping weights.

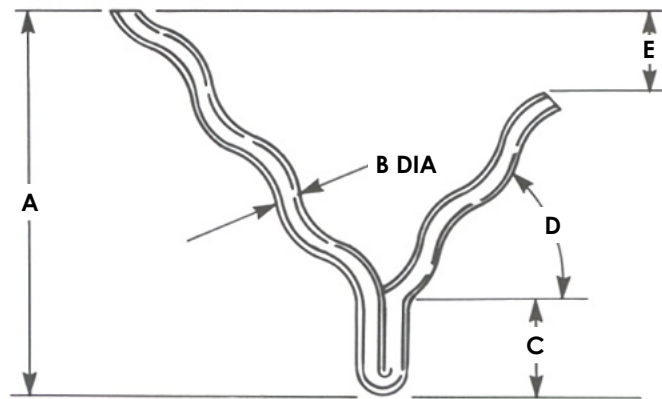


website [www.sunbeltstudwelding.com](http://www.sunbeltstudwelding.com) email [info@sunbeltstudwelding.com](mailto:info@sunbeltstudwelding.com)  
 6381 Windfern Road, Houston, TX 77040 telephone 1.800.462.9353 - Houston 713.939.8903 fax 713.939.9013



# RA EJ-737

## RA EJ-737



Anchor					
Dash Number	A	B	C	D	E
-01	2	1/4	3/4	50°	1/2
-02	2-5/8	1/4	3/4	50°	1/2
-03	3-1/8	1/4	3/4	50°	1/2
-04	3-5/8	1/4	3/4	50°	1/2
-05	4-1/8	1/4	3/4	50°	1/2
-06	5	1/4	3/4	50°	1/2
-07	5-1/8	1/4	3/4	50°	1/2
-08	7-1/8	1/4	3/4	50°	1/2
-09	2-5/8	5/16	3/4	50°	1/2
-10	3-1/8	5/16	3/4	50°	1/2
-11	3-5/8	5/16	3/4	50°	1/2
-12	4-1/8	5/16	3/4	50°	1/2
-13	4-5/8	5/16	3/4	50°	1/2
-14	5-1/8	5/16	3/4	50°	1/2
-15	7-1/8	5/16	3/4	50°	1/2

To order or specify give: Stud Code, Dash Number, Material and Quantity

Example: RA EJ-737, -07, Stainless Steel 310, 750 pcs.

See **Accessories** for accessory detail and **Ferrule Specifications** for ferrule options.

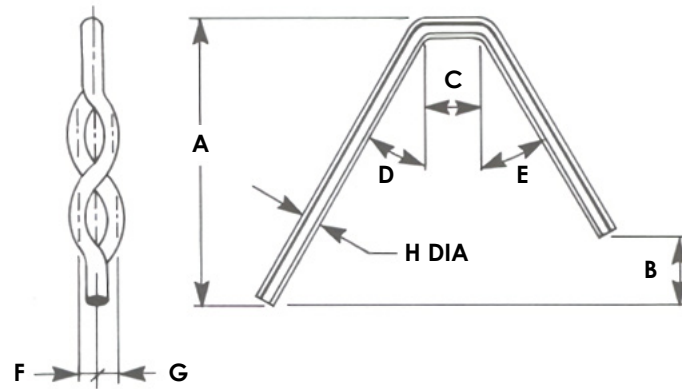
See **Arc Stud Welding – General Information** and **Technical Details** for industry specifications, thread options, Before Weld (BW) length, flux, raw material details, plating options, annealing, load strengths and shipping weights.



website [www.sunbeltstudwelding.com](http://www.sunbeltstudwelding.com) email [info@sunbeltstudwelding.com](mailto:info@sunbeltstudwelding.com)  
 6381 Windfern Road, Houston, TX 77040 telephone 1.800.462.9353 - Houston 713.939.8903 fax 713.939.9013

# RA EJ-738

## RA EJ-738



Anchor								
Dash Number	A	B	C	D	E	F	G	H
-01	1-1/4	1/2	3/4	30°	30°	3/16	3/16	3/16
-02	2-1/4	1/2	3/4	30°	30°	3/16	3/16	3/16
-03	2-3/4	1/2	3/4	30°	30°	3/16	3/16	3/16
-04	3-3/4	1/2	3/4	30°	30°	3/16	3/16	3/16
-05	4-3/4	1/2	3/4	30°	30°	3/16	3/16	3/16
-06	5-3/4	1/2	3/4	30°	30°	3/16	3/16	3/16
-07	6-3/4	1/2	3/4	30°	30°	3/16	3/16	3/16
-08	1-1/4	1/2	3/4	30°	30°	3/16	3/16	1/4
-09	2-1/4	1/2	3/4	30°	30°	3/16	3/16	1/4
-10	2-3/4	1/2	3/4	30°	30°	3/16	3/16	1/4
-11	3-3/4	1/2	3/4	30°	30°	3/16	3/16	1/4
-12	4-3/4	1/2	3/4	30°	30°	3/16	3/16	1/4
-13	5-3/4	1/2	3/4	30°	30°	3/16	3/16	1/4
-14	6-3/4	1/2	3/4	30°	30°	3/16	3/16	1/4

To order or specify give: Stud Code, Dash Number, Material and Quantity

Example: RA EJ-738, -08, Stainless Steel 310, 750 pcs.

See **Accessories** for accessory detail and **Ferrule Specifications** for ferrule options.

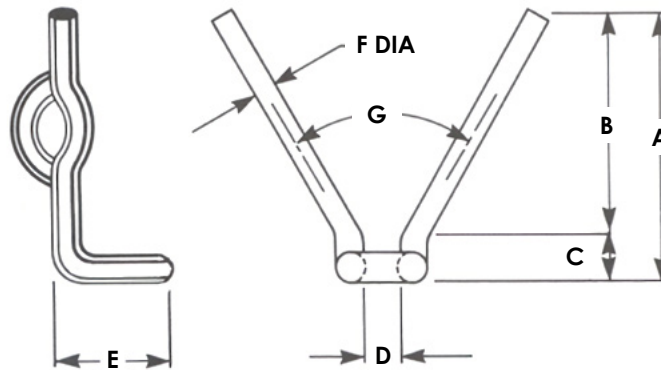
See **Arc Stud Welding – General Information** and **Technical Details** for industry specifications, thread options, Before Weld (BW) length, flux, raw material details, plating options, annealing, load strengths and shipping weights.



website [www.sunbeltstudwelding.com](http://www.sunbeltstudwelding.com) email [info@sunbeltstudwelding.com](mailto:info@sunbeltstudwelding.com)  
 6381 Windfern Road, Houston, TX 77040 telephone 1.800.462.9353 - Houston 713.939.8903 fax 713.939.9013

# RA EJ-739

## RA EJ-739



Anchor							
Dash Number	A	B	C	D	E	F	G
-01	2-5/8	2-1/8	1/2	.406	1-1/4	1/4	60°
-02	3-1/8	2-5/8	1/2	.406	1-1/4	1/4	60°
-03	4-1/8	3-1/8	1	.406	1-1/4	1/4	60°
-04	5-1/8	4-1/8	1	.406	1-1/4	1/4	60°
-05	6-1/8	5-1/8	1	.406	1-1/4	1/4	60°
-06	2-1/8	2-1/8		.406	1-1/4	5/16	60°
-07	2-1/2	2	1/2	.406	1-1/4	5/16	60°
-08	2-5/8	2-5/8		.406	1-1/4	5/16	60°
-09	3-1/8	3-1/8		.406	1-1/4	5/16	60°
-10	3-5/8	3-5/8	1	.406	1-1/4	5/16	60°
-11	3	2-1/2	1/2	.406	1-1/4	5/16	60°
-12	3-1/2	2-1/2	1	.406	1-1/4	5/16	60°
-13	4	3	1	.406	1-1/4	5/16	60°
-14	5-1/8	4-1/8	1	.406	1-1/4	5/16	60°
-15	6-1/8	5-1/8	1	.406	1-1/4	5/16	60°

To order or specify give: Stud Code, Dash Number, Material and Quantity

Example: RA EJ-739, -12, Stainless Steel 310, 750 pcs.

See **Accessories** for accessory detail and **Ferrule Specifications** for ferrule options.

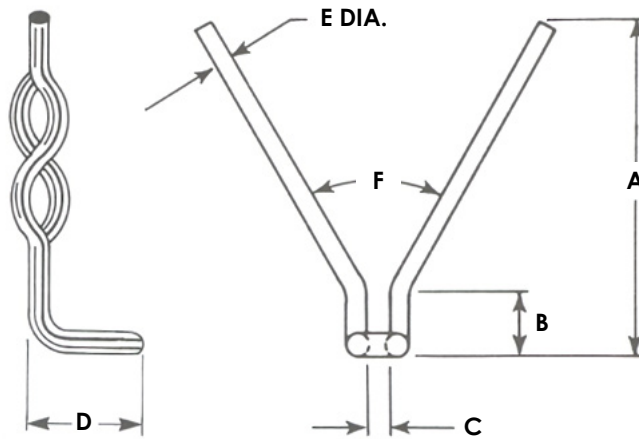
See **Arc Stud Welding – General Information** and **Technical Details** for industry specifications, thread options, Before Weld (BW) length, flux, raw material details, plating options, annealing, load strengths and shipping weights.



website [www.sunbeltstudwelding.com](http://www.sunbeltstudwelding.com) email [info@sunbeltstudwelding.com](mailto:info@sunbeltstudwelding.com)  
6381 Windfern Road, Houston, TX 77040 telephone 1.800.462.9353 - Houston 713.939.8903 fax 713.939.9013

# RA EJ-740

## RA EJ-740



Anchor						
Dash Number	A	B	C	D	E	F
-01	5-1/8	1	.406	1-1/4	1/4	60°
-02	7-1/8	3-1/8	.406	1-1/4	1/4	60°
-03	4-1/4	3/4	.406	1-1/4	5/16	60°
-04	5	1	.406	1-1/4	5/16	60°
-05	6	2	.406	1-1/4	5/16	60°
-06	6	1	.406	1-1/4	5/16	60°
-07	7	3	.406	1-1/4	5/16	60°
-08	8	3	.406	1-1/4	5/16	60°
-09	8	4	.406	1-1/4	5/16	60°
-10	9	4	.406	1-1/4	5/16	60°
-11	10	5	.406	1-1/4	5/16	60°
-12	10	6	.406	1-1/4	5/16	60°
-13	11	6	.406	1-1/4	5/16	60°
-14	12	7	.406	1-1/4	5/16	60°

To order or specify give: Stud Code, Dash Number, Material and Quantity

Example: RA EJ-740, -01, Stainless Steel 310, 750 pcs.

See **Accessories** for accessory detail and **Ferrule Specifications** for ferrule options.

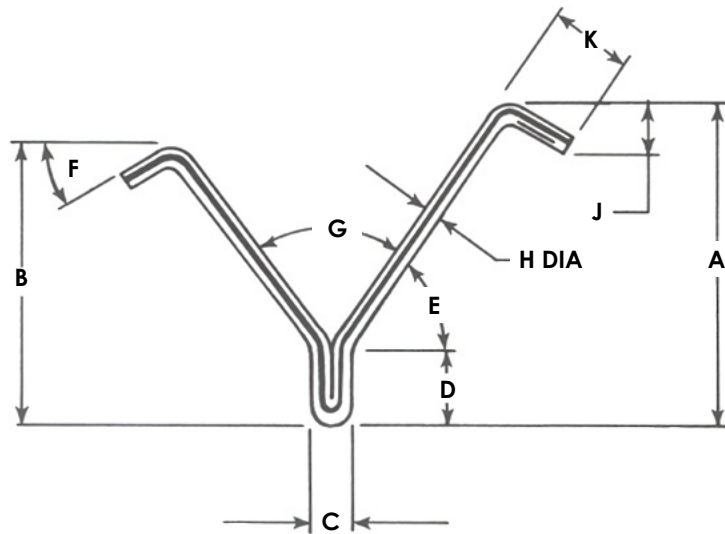
See **Arc Stud Welding – General Information** and **Technical Details** for industry specifications, thread options, Before Weld (BW) length, flux, raw material details, plating options, annealing, load strengths and shipping weights.



website [www.sunbeltstudwelding.com](http://www.sunbeltstudwelding.com) email [info@sunbeltstudwelding.com](mailto:info@sunbeltstudwelding.com)  
 6381 Windfern Road, Houston, TX 77040 telephone 1.800.462.9353 - Houston 713.939.8903 fax 713.939.9013

# RA EJ-741

## RA EJ-741



Anchor										
Dash Number	A	B	C	D	E	F	G	H	J	K
-01	1-5/8	1-3/8	3/8	3/4	54°	30°	72°	3/16	9/16	15/16
-02	2-1/8	1-7/8	3/8	3/4	54°	30°	72°	3/16	9/16	15/16
-03	2-5/8	2-3/8	3/8	3/4	54°	30°	72°	3/16	9/16	15/16
-04	3-1/8	2-7/8	3/8	3/4	54°	30°	72°	3/16	9/16	15/16
-05	3-5/8	3-3/8	3/8	3/4	54°	30°	72°	3/16	9/16	15/16
-06	4-1/8	3-7/8	3/8	3/4	54°	30°	72°	3/16	9/16	15/16
-07	4-5/8	4-3/8	3/8	3/4	54°	30°	72°	3/16	9/16	15/16
-08	5-1/8	4-7/8	3/8	3/4	54°	30°	72°	3/16	9/16	15/16
-09	7-1/8	6-7/8	3/8	3/4	54°	30°	72°	3/16	9/16	15/16
-10	9-1/8	8-7/8	3/8	3/4	54°	30°	72°	3/16	9/16	15/16

To order or specify give: Stud Code, Dash Number, Material and Quantity

Example: RA EJ-741, -09, Stainless Steel 310, 750 pcs.

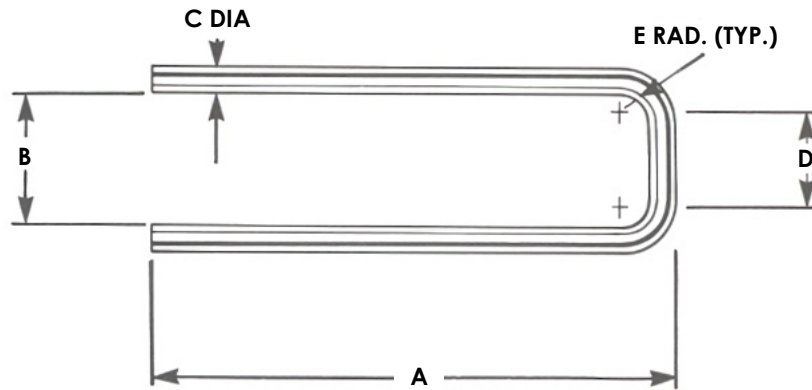
See **Accessories** for accessory detail and **Ferrule Specifications** for ferrule options.

See **Arc Stud Welding – General Information** and **Technical Details** for industry specifications, thread options, Before Weld (BW) length, flux, raw material details, plating options, annealing, load strengths and shipping weights.



website [www.sunbeltstudwelding.com](http://www.sunbeltstudwelding.com) email [info@sunbeltstudwelding.com](mailto:info@sunbeltstudwelding.com)  
 6381 Windfern Road, Houston, TX 77040 telephone 1.800.462.9353 - Houston 713.939.8903 fax 713.939.9013

## RA EJ-742



Anchor											
Dash Number	A	B	C	D	E	Dash Number	A	B	C	D	E
-01	4	1	3/16	3/8	5/16	-09	9	1	1/4	3/8	5/16
-02	4-3/4	1	3/16	3/8	5/16	-10	4-3/4	1	1/4	3/8	5/16
-03	5-3/4	1	3/16	3/8	5/16	-11	5-3/4	1	1/4	3/8	5/16
-04	6	1	3/16	3/8	5/16	-12	6	1	1/4	3/8	5/16
-05	6-1/8	1	3/16	3/8	5/16	-13	6-1/8	1	1/4	3/8	5/16
-06	8-1/2	1	3/16	3/8	5/16	-14	7	1	1/4	3/8	5/16
-07	7	1	3/16	3/8	5/16	-15	8	1	1/4	3/8	5/16
-08	8	1	3/16	3/8	5/16	-16	8-1/2	1	1/4	3/8	5/16

To order or specify give: Stud Code, Dash Number, Material and Quantity  
 Example: RA EJ-742, -07, Stainless Steel 310, 750 pcs.

See **Accessories** for accessory detail and **Ferrule Specifications** for ferrule options.

See **Arc Stud Welding – General Information** and **Technical Details** for industry specifications, thread options, Before Weld (BW) length, flux, raw material details, plating options, annealing, load strengths and shipping weights.



# RA EJ-743

## RA EJ-743

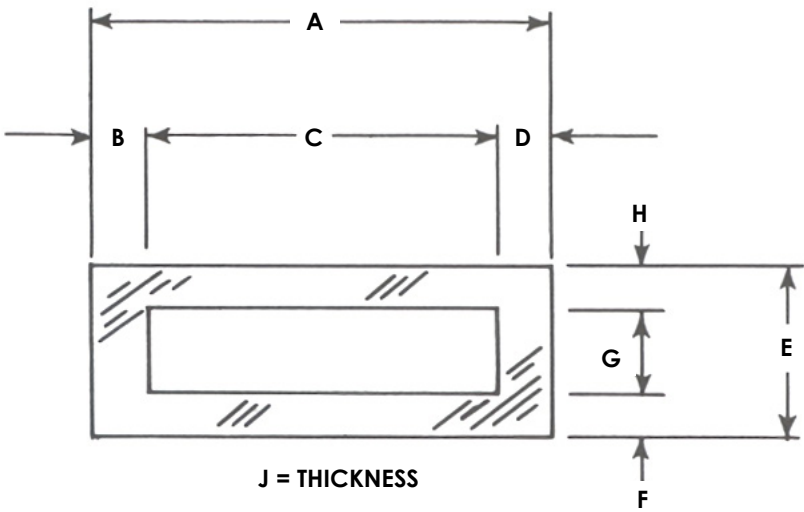


Plate									
Dash Number	A	B	C	D	E	F	G	H	J
-01	2-1/8	1/4	1-5/8	1/4	3/4	7/32	5/16	7/32	1/8

To order or specify give: Stud Code, Dash Number, Material and Quantity  
Example: RA EJ-743, -01, Stainless Steel 310, 750 pcs.

See **Accessories** for accessory detail and **Ferrule Specifications** for ferrule options.

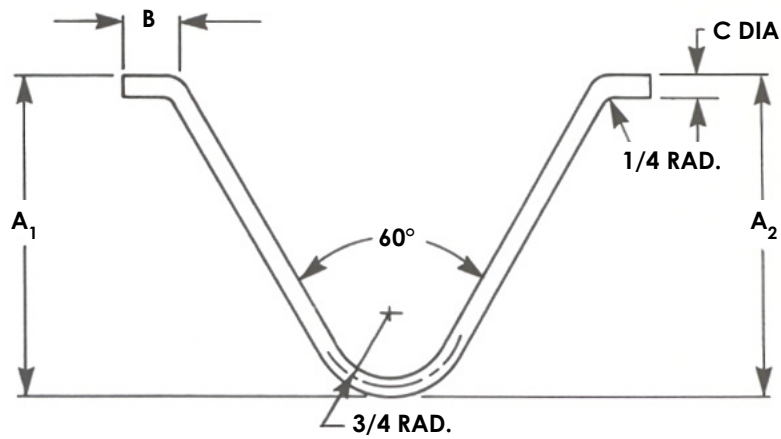
See **Arc Stud Welding – General Information** and **Technical Details** for industry specifications, thread options, Before Weld (BW) length, flux, raw material details, plating options, annealing, load strengths and shipping weights.





# RA EJ-744

## RA EJ-744



Anchor				
Dash Number	A1	A2	B	C
-01	2	2	1/2	3/16
-02	2	4	1	3/16
-03	3	3	1	3/16
-04	3	5	1	3/16
-05	4	4	1	3/16
-06	4	6	1	3/16
-07	5	5	1	3/16
-08	5	7	1	3/16
-09	6	6	1	3/16

To order or specify give: Stud Code, Dash Number, Material and Quantity  
 Example: RA EJ-744, -09, Stainless Steel 310, 750 pcs.

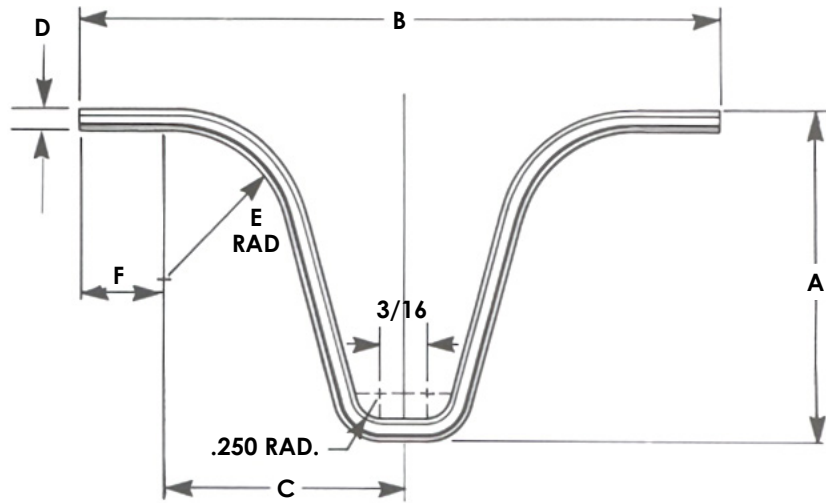
See **Accessories** for accessory detail and **Ferrule Specifications** for ferrule options.

See **Arc Stud Welding – General Information** and **Technical Details** for industry specifications, thread options, Before Weld (BW) length, flux, raw material details, plating options, annealing, load strengths and shipping weights.



# RA EJ-745

## RA EJ-745



Anchor						
Dash Number	A	B	C	D	E	F
-01	3-1/2	6	2-1/4	3/16	1-1/4	3/4
-02	4	6	2-1/4	3/16	1-1/4	3/4
-03	4-1/2	6	2-1/4	3/16	1-1/4	3/4
-04	5	6	2-1/4	3/16	1-1/4	3/4
-05	5-1/2	6	2-1/4	3/16	1-1/4	3/4
-06	6	6	2-1/4	3/16	1-1/4	3/4

To order or specify give: Stud Code, Dash Number, Material and Quantity  
 Example: RA EJ-745, -03, Stainless Steel 310, 750 pcs.

See **Accessories** for accessory detail and **Ferrule Specifications** for ferrule options.

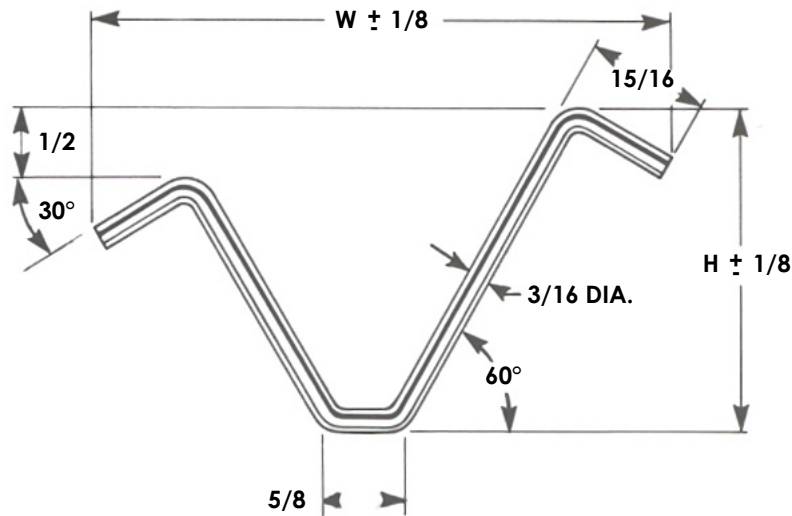
See **Arc Stud Welding – General Information** and **Technical Details** for industry specifications, thread options, Before Weld (BW) length, flux, raw material details, plating options, annealing, load strengths and shipping weights.



website [www.sunbeltstudwelding.com](http://www.sunbeltstudwelding.com) email [info@sunbeltstudwelding.com](mailto:info@sunbeltstudwelding.com)  
 6381 Windfern Road, Houston, TX 77040 telephone 1.800.462.9353 - Houston 713.939.8903 fax 713.939.9013

# RA EJ-746

## RA EJ-746



Anchor					
Dash Number	H	W	Dash Number	H	W
-01	2	3-1/2	-09	6	9-1/2
-02	2-1/2	4-1/4	-10	6-1/2	10-1/4
-03	3	5	-11	7	11
-04	3-1/2	5-3/4	-12	7-1/2	11-3/4
-05	4	6-1/2	-13	8	12-1/2
-06	4-1/2	7-1/4	-14	8-1/2	13-1/4
-07	5	8	-15	9	14
-08	5-1/2	8-3/4			

To order or specify give: Stud Code, Dash Number, Material and Quantity

Example: RA EJ-746, -06, Stainless Steel 310, 750 pcs.

See **Accessories** for accessory detail and **Ferrule Specifications** for ferrule options.

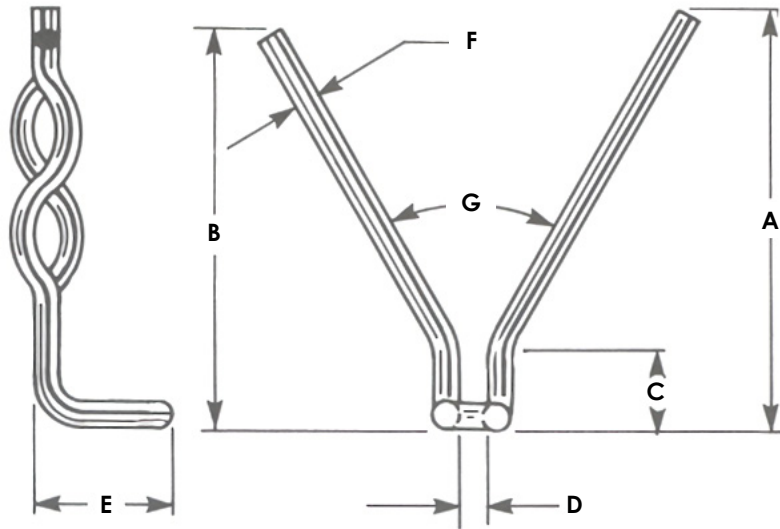
See **Arc Stud Welding – General Information** and **Technical Details** for industry specifications, thread options, Before Weld (BW) length, flux, raw material details, plating options, annealing, load strengths and shipping weights.



website [www.sunbeltstudwelding.com](http://www.sunbeltstudwelding.com) email [info@sunbeltstudwelding.com](mailto:info@sunbeltstudwelding.com)  
 6381 Windfern Road, Houston, TX 77040 telephone 1.800.462.9353 - Houston 713.939.8903 fax 713.939.9013

# RA EJ-750

## RA EJ-750



Anchor							
Dash Number	A	B	C	D	E	F	G
-01	7	6-1/2	3-1/8	7/16	1-1/4	1/4	60°

To order or specify give: Stud Code, Dash Number, Material and Quantity

Example: RA EJ-750, -01, Stainless Steel 310, 750 pcs.

See **Accessories** for accessory detail and **Ferrule Specifications** for ferrule options.

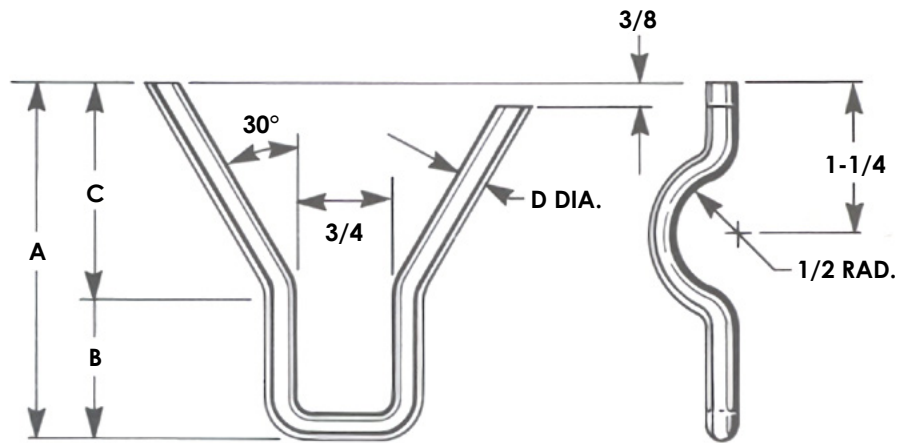
See **Arc Stud Welding – General Information** and **Technical Details** for industry specifications, thread options, Before Weld (BW) length, flux, raw material details, plating options, annealing, load strengths and shipping weights.



website [www.sunbeltstudwelding.com](http://www.sunbeltstudwelding.com) email [info@sunbeltstudwelding.com](mailto:info@sunbeltstudwelding.com)  
 6381 Windfern Road, Houston, TX 77040 telephone 1.800.462.9353 - Houston 713.939.8903 fax 713.939.9013

# RA EJ-751

## RA EJ-751



Anchor									
Dash Number	A	B	C	D	Dash Number	A	B	C	D
-01	2.2	0	2.2	1/4	-06	7	2	4	1/4
-02	3	1	2	1/4	-07	8	3	5	1/4
-03	4	1	3	1/4	-08	9	4	5	1/4
-04	5	2	3	1/4	-09	10	5	5	1/4
-05	6	2	4	1/4	-10	11	6	5	1/4

To order or specify give: Stud Code, Dash Number, Material and Quantity

Example: RA EJ-751, -03, Stainless Steel 310, 750 pcs.

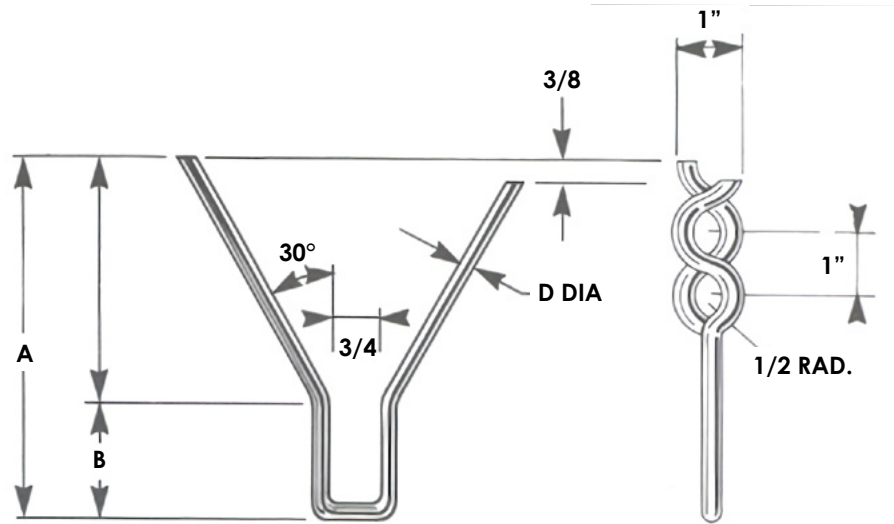
See **Accessories** for accessory detail and **Ferrule Specifications** for ferrule options.

See **Arc Stud Welding – General Information** and **Technical Details** for industry specifications, thread options, Before Weld (BW) length, flux, raw material details, plating options, annealing, load strengths and shipping weights.



website [www.sunbeltstudwelding.com](http://www.sunbeltstudwelding.com) email [info@sunbeltstudwelding.com](mailto:info@sunbeltstudwelding.com)  
 6381 Windfern Road, Houston, TX 77040 telephone 1.800.462.9353 - Houston 713.939.8903 fax 713.939.9013

## RA EJ-752



Anchor									
Dash Number	A	B	C	D	Dash Number	A	B	C	D
-01	2.2	0	2.2	1/4	-06	7	2	4	1/4
-02	3	1	2	1/4	-07	8	3	5	1/4
-03	4	1	3	1/4	-08	9	4	5	1/4
-04	5	2	3	1/4	-09	10	5	5	1/4
-05	6	2	4	1/4	-10	11	6	5	1/4

To order or specify give: Stud Code, Dash Number, Material and Quantity  
 Example: RA EJ-752, -05, Stainless Steel 310, 750 pcs.

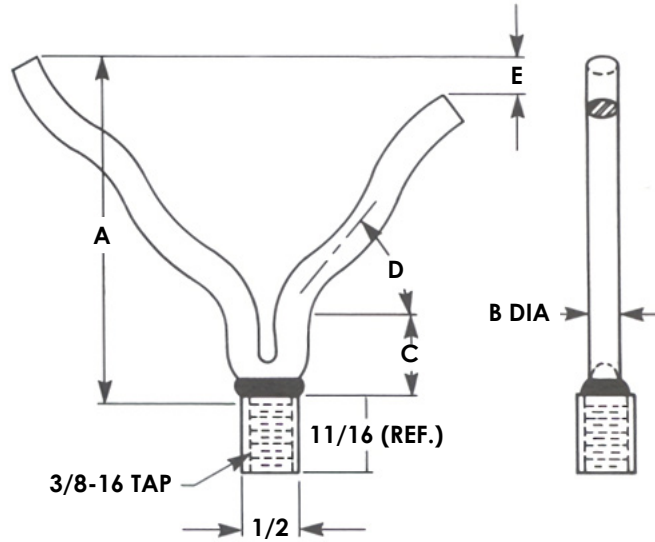
See **Accessories** for accessory detail and **Ferrule Specifications** for ferrule options.

See **Arc Stud Welding – General Information** and **Technical Details** for industry specifications, thread options, Before Weld (BW) length, flux, raw material details, plating options, annealing, load strengths and shipping weights.



# RA EJ-801

## RA EJ-801



Anchor					
Dash Number	A	B	C	D	E
-01	2	1/4	3/4	50°	1/2
-02	2-5/8	1/4	3/4	50°	1/2
-03	3-1/8	1/4	3/4	50°	1/2
-04	3-5/8	1/4	3/4	50°	1/2
-05	4-1/8	1/4	3/4	50°	1/2
-06	5	1/4	3/4	50°	1/2
-07	5-1/8	1/4	3/4	50°	1/2
-08	7-1/8	1/4	3/4	50°	1/2
-09	2-5/8	5/16	3/4	50°	1/2
-10	3-1/8	5/16	3/4	50°	1/2
-11	3-5/8	5/16	3/4	50°	1/2
-12	4-1/8	5/16	3/4	50°	1/2
-13	4-5/8	5/16	3/4	50°	1/2
-14	5-1/8	5/16	3/4	50°	1/2
-15	7-1/8	5/16	3/4	50°	1/2

To order or specify give: Stud Code, Dash Number, Material and Quantity  
 Example: RA EJ-801, -02, Stainless Steel 310, 750 pcs.

See **Accessories** for accessory detail and **Ferrule Specifications** for ferrule options.

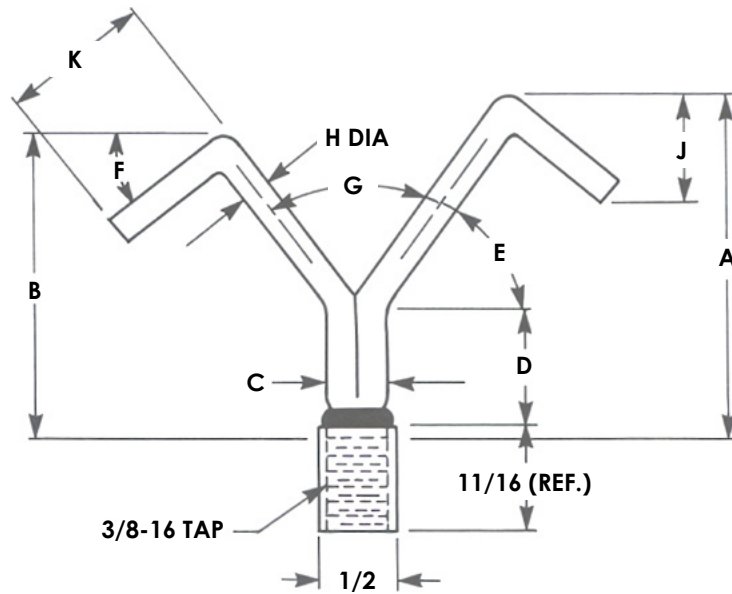
See **Arc Stud Welding – General Information** and **Technical Details** for industry specifications, thread options, Before Weld (BW) length, flux, raw material details, plating options, annealing, load strengths and shipping weights.



website [www.sunbeltstudwelding.com](http://www.sunbeltstudwelding.com) email [info@sunbeltstudwelding.com](mailto:info@sunbeltstudwelding.com)  
 6381 Windfern Road, Houston, TX 77040 telephone 1.800.462.9353 - Houston 713.939.8903 fax 713.939.9013

# RA EJ-802

## RA EJ-802



Anchor										
Dash Number	A	B	C	D	E	F	G	H	J	K
-01	1-5/8	1-3/8	3/8	3/4	54°	30°	72°	3/16	9/16	15/16
-02	2-1/8	1-7/8	3/8	3/4	54°	30°	72°	3/16	9/16	15/16
-03	2-5/8	2-3/8	3/8	3/4	54°	30°	72°	3/16	9/16	15/16
-04	3-1/8	2-7/8	3/8	3/4	54°	30°	72°	3/16	9/16	15/16
-05	3-5/8	3-3/8	3/8	3/4	54°	30°	72°	3/16	9/16	15/16
-06	4-1/8	3-7/8	3/8	3/4	54°	30°	72°	3/16	9/16	15/16
-07	4-5/8	4-3/8	3/8	3/4	54°	30°	72°	3/16	9/16	15/16
-08	5-1/8	4-7/8	3/8	3/4	54°	30°	72°	3/16	9/16	15/16
-09	7-1/8	6-7/8	3/8	3/4	54°	30°	72°	3/16	9/16	15/16
-10	9-1/8	8-7/8	3/8	3/4	54°	30°	72°	3/16	9/16	15/16

To order or specify give: Stud Code, Dash Number, Material and Quantity

Example: RA EJ-802, -05, Stainless Steel 310, 750 pcs.

See **Accessories** for accessory detail and **Ferrule Specifications** for ferrule options.

See **Arc Stud Welding – General Information** and **Technical Details** for industry specifications, thread options, Before Weld (BW) length, flux, raw material details, plating options, annealing, load strengths and shipping weights.

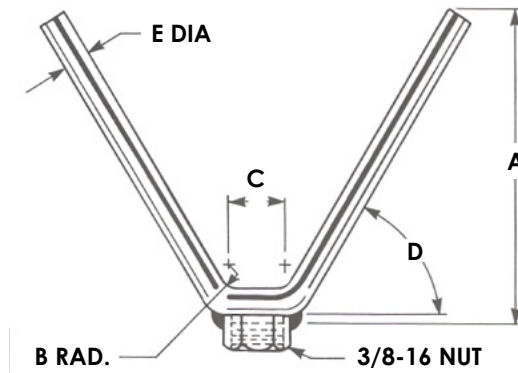


website [www.sunbeltstudwelding.com](http://www.sunbeltstudwelding.com) email [info@sunbeltstudwelding.com](mailto:info@sunbeltstudwelding.com)  
 6381 Windfern Road, Houston, TX 77040 telephone 1.800.462.9353 - Houston 713.939.8903 fax 713.939.9013



# RA EJ-803

## RA EJ-803



Anchor					
Dash Number	A	B	C	D	E
-01	2	3/4	3/4	60°	1/8
-02	3	3/4	3/4	60°	1/8
-03	6-1/2	3/4	3/4	60°	1/8
-04	1-1/2	3/4	3/4	60°	3/16
-05	2	3/4	3/4	60°	3/16
-06	2-1/4	3/4	3/4	60°	3/16
-07	2-3/4	3/4	3/4	60°	3/16
-08	3-3/4	3/4	3/4	60°	3/16
-09	4-1/2	3/4	3/4	60°	3/16
-10	5-1/2	3/4	3/4	60°	3/16
-11	6-1/2	3/4	3/4	60°	3/16
-12	1-1/2	3/4	3/4	60°	1/4
-13	2-1/4	3/4	3/4	60°	1/4
-14	2-3/4	3/4	3/4	60°	1/4
-15	3-3/4	3/4	3/4	60°	1/4
-16	4-1/2	3/4	3/4	60°	1/4
-17	3-1/2	3/4	3/4	60°	1/4
-18	6-1/2	3/4	3/4	60°	1/4

To order or specify give: Stud Code, Dash Number, Material and Quantity

Example: RA EJ-803, -13, Stainless Steel 310, 750 pcs.

See **Accessories** for accessory detail and **Ferrule Specifications** for ferrule options.

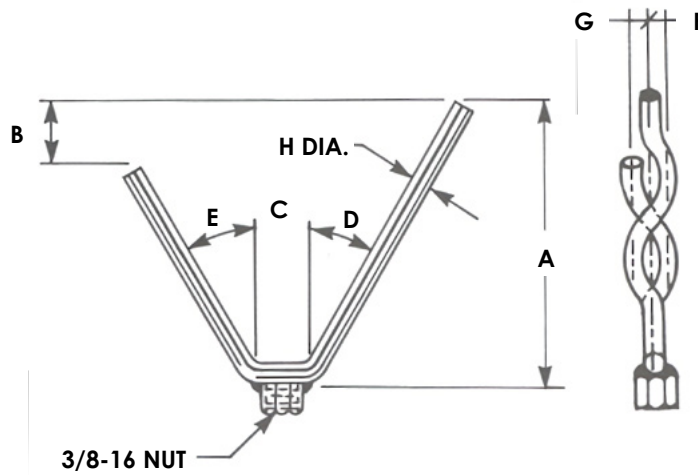
See **Arc Stud Welding – General Information** and **Technical Details** for industry specifications, thread options, Before Weld (BW) length, flux, raw material details, plating options, annealing, load strengths and shipping weights.



website [www.sunbeltstudwelding.com](http://www.sunbeltstudwelding.com) email [info@sunbeltstudwelding.com](mailto:info@sunbeltstudwelding.com)  
 6381 Windfern Road, Houston, TX 77040 telephone 1.800.462.9353 - Houston 713.939.8903 fax 713.939.9013

# RA EJ-804

## RA EJ-804



Anchor								
Dash Number	A	B	C	D	E	F	G	H
-01	1-1/4	1/2	3/4	30°	30°	3/16	3/16	3/16
-02	2-1/4	1/2	3/4	30°	30°	3/16	3/16	3/16
-03	2-3/4	1/2	3/4	30°	30°	3/16	3/16	3/16
-04	3-3/4	1/2	3/4	30°	30°	3/16	3/16	3/16
-05	4-3/4	1/2	3/4	30°	30°	3/16	3/16	3/16
-06	5-3/4	1/2	3/4	30°	30°	3/16	3/16	3/16
-07	6-3/4	1/2	3/4	30°	30°	3/16	3/16	3/16
-08	1-1/4	1/2	3/4	30°	30°	3/16	3/16	1/4
-09	2-1/4	1/2	3/4	30°	30°	3/16	3/16	1/4
-10	2-3/4	1/2	3/4	30°	30°	3/16	3/16	1/4
-11	3-3/4	1/2	3/4	30°	30°	3/16	3/16	1/4
-12	4-3/4	1/2	3/4	30°	30°	3/16	3/16	1/4
-13	5-3/4	1/2	3/4	30°	30°	3/16	3/16	1/4
-14	6-3/4	1/2	3/4	30°	30°	3/16	3/16	1/4

To order or specify give: Stud Code, Dash Number, Material and Quantity  
 Example: RA EJ-804, -11, Stainless Steel 310, 750 pcs.

See **Accessories** for accessory detail and **Ferrule Specifications** for ferrule options.

See **Arc Stud Welding – General Information** and **Technical Details** for industry specifications, thread options, Before Weld (BW) length, flux, raw material details, plating options, annealing, load strengths and shipping weights.



website [www.sunbeltstudwelding.com](http://www.sunbeltstudwelding.com) email [info@sunbeltstudwelding.com](mailto:info@sunbeltstudwelding.com)  
 6381 Windfern Road, Houston, TX 77040 telephone 1.800.462.9353 - Houston 713.939.8903 fax 713.939.9013