



SECTION 12
FERRULE OPTIONS & DETAILS

FOR INQUIRIES, TO PLACE ORDERS,
SERVICE AND TECHNICAL SUPPORT CONTACT
ANY OF THE FOLLOWING:

OFFICE: 1-800-462-9353
713-939-8903

EMAIL: INFO@SUNBELTSTUDWELDING.COM



website www.sunbeltstudwelding.com **email** info@sunbeltstudwelding.com
6381 Windfern Road, Houston, TX 77040 **telephone** 1.800.462.9353 - Houston 713.939.8903 **fax** 713.939.9013

Ferrules

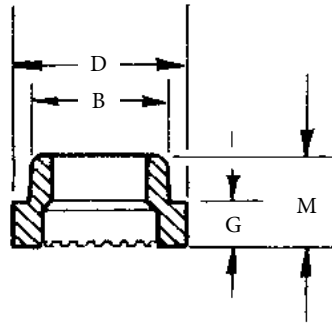
FERRULE OPTIONS & COMMON USAGE

Ferrule Options & Common Usage			
Surface	Ferrule Option	Base of Weld Stud	Comment
Flat	Flat	Full Base	For welding full base studs
	Heavy Duty	Full Base	For welding in applications where the "Flat" ferrule is prone to breaking
	Low Profile	Full Base	For welding studs shorter than 1.0" in length
	Vertical	Full Base	For welding in the side hand position / vertical surface
	Weld Thru Deck	Full Base	Specific to the Weld Thru Deck (WTD) application
	Reduced Base	Less than stud Dia.	Specific to welding Reduced Base type weld studs
	Pitch	Pitch Diameter	For welding partially threaded studs
	Thru Bore	Less than stud Dia.	Used for specific applications and or weld base diameters
	Collar Stud	Pitch Diameter	For welding Collar Stud type studs
	Angle to Work	Full Base	Required for very specific applications
	Rectangular	Rectangular	For welding Rectangular Type (shaped) studs
Inside Corner	Inside Angle	Full Base	For welding to the inside angle
Outside Corner	Outside Angle	Full Base	For welding to the outside angle
Round	Curved	Various	For welding to round / curved surface
Edge	Edge	Full Base	For welding stud to edge of plate
Other	Special	All	When needed, ferrules are designed and made to meet application needs
NOTE, Full Base means the full diameter (ie. 1/4", 5/16", 3/8", 7/16", 1/2", 5/8", 3/4", 7/8" or 1") of the stud is to be welded.			



Ferrules

STANDARD FERRULES

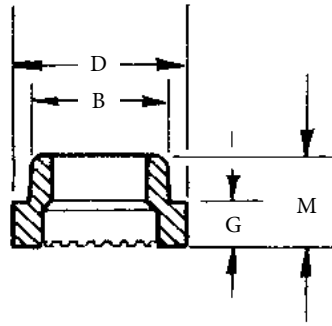


Standard Ferrules						
Type	Nominal Size	SSW Part Number	D	B	M	G
F (Flat)	3/16	F019-F	0.390	0.281	0.390	0.234
	1/4	F025-F	0.455	0.380	0.390	0.234
	5/16	F031-F	0.578	0.455	0.390	0.234
	3/8	F037-F	0.640	0.505	0.390	0.234
	7/16	F043-F	0.703	0.585	0.422	0.234
	1/2	F050-F	0.795	0.650	0.438	0.250
	5/8	F062-F	1.030	0.785	0.516	0.328
	3/4	F075-F	1.218	1.030	0.656	0.468
	7/8	F087-F	1.406	1.210	0.732	0.544
	1	F100-F	1.610	1.406	0.820	0.632
HD (Heavy Duty)	1/4	F025-HD	0.645	0.515	0.390	0.240
	3/8	F037-HD	0.800	0.645	0.400	0.250
	1/2	F050-HD	0.875	0.785	0.455	0.270
	5/8	F062-HD	1.230	1.035	0.520	0.335
LP (Low Profile)	1/4	F025-LP	0.457	0.380	0.282	0.165
	5/16	F031-LP	0.595	0.505	0.265	0.141
	3/8	F037-LP	0.650	0.515	0.308	0.200
	1/2	F050-LP	0.835	0.657	0.305	0.165
	5/8	F062-LP	1.024	0.794	0.433	0.285
	3/4	F075-LP	1.250	1.025	0.465	0.265
V (Vertical)	1/4	F025-V	0.450	0.370	0.390	0.240
	3/8	F037-V	0.640	0.500	0.400	0.240
	1/2	F050-V	0.795	0.655	0.455	0.270
	5/8	F062-V	1.020	0.785	0.520	0.335
	3/4	F075-V	1.220	1.030	0.660	0.475
	7/8	F087-V	1.436	1.221	0.769	0.577
TD (Weld Thru Deck)	3/8	F037-TD	0.893	0.794	0.442	0.286
	1/2	F050-TD	0.800	0.645	0.450	0.265
	5/8	F062-TD	1.015	0.775	0.525	0.340
	3/4	F075-TD	1.335	1.210	0.600	0.415
	7/8	F087-TD	1.528	1.406	0.666	0.466

For other ferrule options (including Angle to Work, Rectangular, Curved, Edge) contact Sunbelt Stud Welding.

Ferrules

STANDARD FERRULES



Standard Ferrules						
Type	Nominal Size	SSW Part Number	D	B	M	G
R (Reduced Base)	3/8	F037-R	0.595	0.505	0.250	0.250
	7/16	F043-R	0.675	0.585	0.250	0.250
	1/2	F050-R	0.740	0.650	0.281	0.281
	5/8	F062-R	0.875	0.785	0.281	0.281
	3/4	F075-R	1.030	0.921	0.375	0.375
B (Thru-Bore)	3/8	F037-B	0.647	0.506	0.405	0.252
	1/2	F050-B	0.804	0.637	0.534	0.341
P (Pitch)	1/4	F025-P	0.455	0.380	0.250	0.125
	5/16	F031-P	0.535	0.445	0.250	0.125
	3/8	F037-P	0.595	0.505	0.265	0.140
	7/16	F043-P	0.675	0.585	0.329	0.173
	1/2	F050-P	0.740	0.650	0.362	0.206
	5/8	F062-P	0.905	0.785	0.433	0.277
	3/4	F075-P	1.150	1.030	0.526	0.339
	7/8	F087-P	1.330	1.203	0.593	0.406
TC (Collar Stud)	1/4	F025-TC	0.875	0.785	0.250	0.250
	5/16	F031-TC	0.875	0.785	0.250	0.250
	3/8	F037-TC	0.875	0.785	0.250	0.250
	1/2	F050-TC	1.203	1.045	0.281	0.281
	IA (Inside Angle)	1/4	F025-IA	0.586	0.377	0.505
3/8		F037-IA	0.650	0.505	0.495	0.335
1/2 - Radius 1/4"		F050-IA25	0.808	0.673	0.668	0.468
1/2 - Radius 3/8"		F050-IA37	0.818	0.667	0.684	0.505
5/8 - Radius 1/4"		F062-IA25	1.034	0.800	0.923	0.733
5/8 - Radius 3/8"		F062-IA37	1.034	0.800	0.904	0.719
3/4 - Radius 3/8"		F075-IA37	1.253	1.033	1.016	0.822
OA (Outside Angle)	1/4	F025-OA	0.577	0.432	0.412	0.286
	3/8	F037-OA	0.709	0.505	0.682	0.526
	1/2	F050-OA	1.041	0.794	0.842	0.648
	5/8	F062-OA	1.043	0.790	0.927	0.729
	3/4	F075-OA				

For other ferrule options (including Angle to Work, Rectangular, Curved, Edge) contact Sunbelt Stud Welding Representative.