

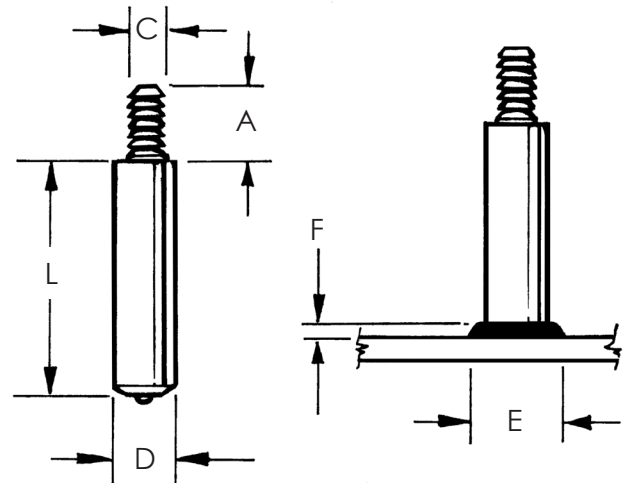
# Arc Weld Studs - Externally Threaded

## TAG - SHOULDER ANNULAR GROOVE WELD STUDS - TECHNICAL DETAILS

TAG weld studs are available in mild steel and stainless steel materials.

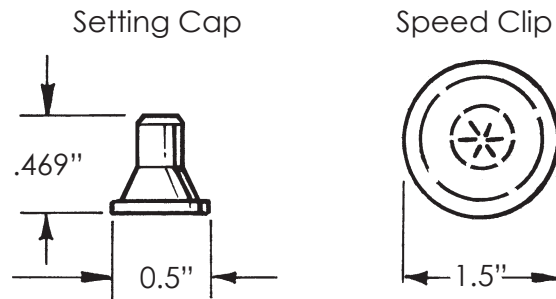
TAG studs are used to make roof or wall systems and to cover and insulate tanks. The speed clip is commonly used to secure insulation material impaled over the stud prior to capping. After the sheet metal skin is impaled over the annular grooves, the cap-setting tool and a hammer are used to install the setting caps onto the TAG studs.

For application, dimensional and in stock assistance, please contact Sunbelt Stud Welding.



Stud Specifications						Standard Accessories			
Base Diameter	Groove Diameter	Groove Length	Min. Length	Flash Dimensions		Ferrule	Foot	Grip	Chuck
D	C	A	L	E	F				
0.312	0.188	0.375	0.625	0.438	0.109	F031-F	B-IN	GN-031	CN-018
0.312	0.188	0.438	0.625	0.438	0.109	F031-F	B-IN	GN-031	CN-018

Recommended Hardware:	Part Number
Speed Clip - Mild Steel	SAG-001
Speed Clip - Stainless Steel	SAG-002
Speed Clip - Aluminum	SAG-003
Setting Caps - Aluminum	SAG-004
Setting Tool	SAG-005



To order or specify give: Stud Code, Dimensions D x L, A, Material and Quantity

Example: TAG .312 x 7/8, .437, (BW), Mild Steel, 4000 pcs.

Specify (L) Length on a Before Weld basis by indicating "BW"  
or on an After Weld basis by indicating "AW."

See **Accessories** for accessory detail and **Ferrule Specifications** for ferrule options.

See **Arc Stud Welding – General Information** and **Technical Details** for industry specifications, thread options, Before Weld (BW) length, flux, raw material details, plating options, annealing, load strengths and shipping weights.



website [www.sunbeltstudwelding.com](http://www.sunbeltstudwelding.com) email [info@sunbeltstudwelding.com](mailto:info@sunbeltstudwelding.com)  
6381 Windfern Road, Houston, TX 77040 telephone 1.800.462.9353 - Houston 713.939.8903 fax 713.939.9013