



SECTION 10
SHORT CYCLE WELD STUDS

FOR INQUIRIES, TO PLACE ORDERS,
SERVICE AND TECHNICAL SUPPORT CONTACT
ANY OF THE FOLLOWING:

OFFICE: 1-800-462-9353
713-939-8903

EMAIL: INFO@SUNBELTSTUDWELDING.COM



website www.sunbeltstudwelding.com **email** info@sunbeltstudwelding.com
6381 Windfern Road, Houston, TX 77040 **telephone** 1.800.462.9353 - Houston 713.939.8903 **fax** 713.939.9013

Short Cycle Weld Studs

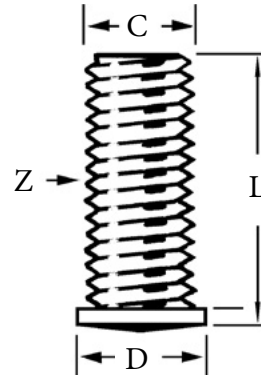
SCT - SHORT CYCLE THREADED WELD STUDS - TECHNICAL DETAILS

The CD Drawn Arc process and the Arc Short Cycle process are the best equipment options for welding of Short Cycle weld studs.

In some applications the Standard Arc Process can be used without the ceramic ferrule.

The small flange diameter allows for components to be easily mounted on welded studs.

For assistance contact Sunbelt Stud Welding.



Stud Specifications				Standard Accessories			
Thread Size	Stud Diameter	Flange Diameter	Min. Length	Standard Adjustable Chuck	Standard Adjustable Chuck Long Style	Long Collet 2-3/8" Long	Euro Collet 1.80" Long
C	Z	D	L	P/N	P/N	P/N *	P/N
4-40	0.112	0.143	0.250	CN-010	CM-010	CDBN-010	CDBS-010
6-32	0.138	0.169	0.250	CN-013	CM-013	CDBN-013	CDBS-013
8-32	0.164	0.195	0.250	CN-015	CM-015	CDBN-015	CDBS-015
10-24	0.190	0.221	0.250	CN-018	CM-018	CDBN-018	CDBS-018
10-32	0.190	0.221	0.250	CN-018	CM-018	CDBN-018	CDBS-018
1/4-20	0.250	0.281	0.250	CN-025	CM-025	CDBN-025	CDBS-025
5/16-18	0.312	0.344	0.500	CN-031	CM-031	CDBN-031	CDBS-031
3/8-16	0.375	0.418	0.500	CN-037	CM-037	CDBN-037	CDBS-037

* Note, Requires Long Style Stops, see Accessories for details

To order or specify give: Stud Code, C x L, Material and Quantity

Example: SCT, 10-24 X 0.50, mild steel, 8000 pcs.

See **Accessories** for accessory detail.

See **Short Cycle Stud Welding – General Information** and **Technical Details** for industry specifications, thread options, Before Weld (BW) length, flux, raw material details, plating options, annealing, load strengths and shipping weights.



website www.sunbeltstudwelding.com email info@sunbeltstudwelding.com
 6381 Windfern Road, Houston, TX 77040 telephone 1.800.462.9353 - Houston 713.939.8903 fax 713.939.9013



Short Cycle Weld Studs

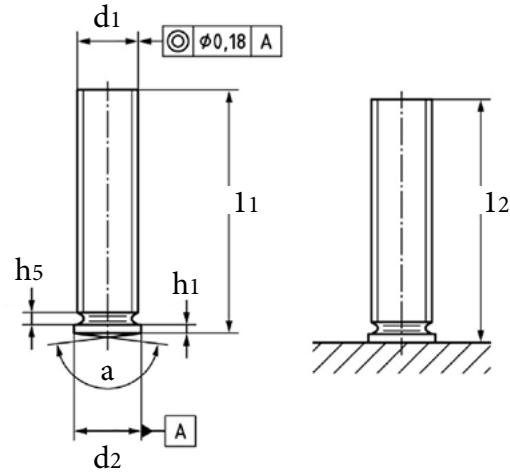
SCM – SHORT CYCLE THREADED WELD STUDS – METRIC THREAD SIZES



PS Threaded studs with flange

Material - Steel 4.8 copper coated (suitable for welding)

Suitable for stud feeding:	
Manual	Automation 1)
	



Stud Specifications					
Diameter d_1	$l_1+0.6$	$d_2\pm 0.2$	h_1	max h_5	$a\pm 2^\circ$
M5	Length 10 mm - 40 mm	6.0	0.7 - 1.4	1.0	166°
M6		7.0			
M8		9.0	0.8 - 1.4	1.5	

Custom dimensions are not listed in the table, pricing available on request.

1) For automation:

Diameter: M3 to M8 (M10 with modification only)

Stud length: 8 to 40mm (other lengths on request)

To order or specify give: Stud Code, Diameter, Length and Quantity

Example: SCM, M6, 20mm, 5000 pcs.

See **Accessories** for accessory detail.

See **Short Cycle Stud Welding – General Information** and **Technical Details** for industry specifications, thread options, Before Weld (BW) length, flux, raw material details, plating options, annealing, load strengths and shipping weights.



website www.sunbeltstudwelding.com email info@sunbeltstudwelding.com
 6381 Windfern Road, Houston, TX 77040 telephone 1.800.462.9353 - Houston 713.939.8903 fax 713.939.9013

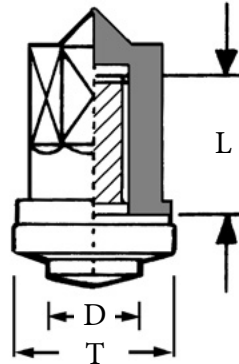
Short Cycle Weld Studs

SCM – SHORT CYCLE GROUND STUD W/ CAP – TECHNICAL DETAILS

The Arc Short Cycle process is the best equipment option for welding Short Cycle Ground Studs.

The Standard Arc Process can be used without the ceramic ferrule. Gas shielding is recommended regardless of process used.

Studs are available with or without the caps installed. Studs are available in mild steel and 18-8 stainless steel. Mild steel studs are copper or nickel plated.



The Short Cycle Ground Stud is used as a ground stud in several automotive and industrial applications. The plastic cap protects the threads and washer face during paint operations. Once the cap is removed, the paint free washer face and threads provide an excellent connection point for ground terminals.

Stud Specifications					Standard Accessories *		
Thread Size	Thread Length	Weld Base Diameter	Collar Diameter	Washer Face Diameter	Standard Adjustable Chuck	Standard Adjustable Chuck Long Style	Euro Collet 1.80" Long
C	L	D	T	W	P/N	P/N	P/N
M6-1.00	0.472	0.317	0.550	0.460	CN-006M	CM-006M	CDBS-006M
	0.591						
M8-1.25	0.472	0.390	0.550	0.460	CN-008M	CM-008M	CDBS-008M
	0.591						

* For Chucks & Collet to weld with the cap installed, contact your SSW Representative

To order or specify give: Stud Code, C x L, Material and Quantity
 Example: SCM, M6-1.00 X .472, mild steel, 5000 pcs.

See **Accessories** for accessory detail.

See **Short Cycle Stud Welding – General Information** and **Technical Details** for industry specifications, thread options, Before Weld (BW) length, flux, raw material details, plating options, annealing, load strengths and shipping weights.



website www.sunbeltstudwelding.com email info@sunbeltstudwelding.com
 6381 Windfern Road, Houston, TX 77040 telephone 1.800.462.9353 - Houston 713.939.8903 fax 713.939.9013

Short Cycle Weld Studs

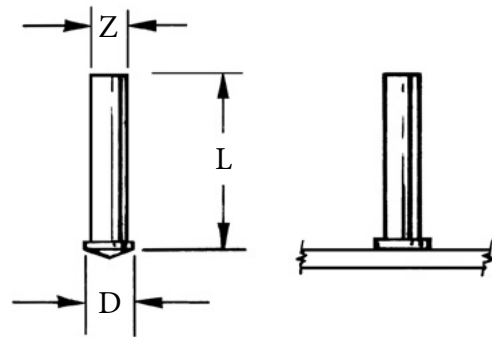
SCN – SHORT CYCLE NO THREAD WELD STUDS – TECHNICAL DETAILS

The CD Drawn Arc process and the Arc Short Cycle process are the best equipment options for welding of Short Cycle weld studs.

In some applications the Standard Arc Process can be used without the ceramic ferrule.

The small flange diameter allows for components to be easily mounted on welded studs.

For assistance contact Sunbelt Stud Welding.



Stud Specifications			Standard Accessories			
Stud Diameter	Flange Diameter	Min. Length	Standard Adjustable Chuck	Standard Adjustable Chuck Long Style	Long Collet 2 3/8" Long	Euro Collet 1.80" Long
Z	D	L	P/N	P/N	P/N*	P/N
0.094	0.143	0.250	CA	CA	CA	CA
0.112	0.156	0.250	CN-010	CM-010	CDBN-010	CDBS-010
0.125	0.156	0.250	CN-012	CM-012	CDBN-012	CDBS-012
0.138	0.195	0.250	CN-013	CM-013	CDBN-013	CDBS-013
0.156	0.221	0.250	CN-004M	CM-004M	CDBN-004M	CDBS-004M
0.164	0.221	0.250	CN-015	CM-015	CDBN-015	CDBS-015
0.188	0.221	0.250	CN-018	CM-018	CDBN-018	CDBS-018
0.215	0.281	0.250	CA	CA	CA	CA
0.250	0.281	0.250	CN-025	CM-025	CDBN-025	CDBS-025
0.273	0.343	0.375	CA	CA	CA	CA
0.312	0.344	0.500	CN-031	CM-031	CDBN-031	CDBS-031
0.375	0.418	0.500	CN-037	CM-037	CDBN-037	CDBS-037

* Note, Requires Long Style Stops, see Accessories for details

CA - Check Availability - not standard stock items

To order or specify give: Stud Code, D x L, Material and Quantity

Example: SCN, .156 X 0.75, mild steel, 2000 pcs.

See **Accessories** for accessory detail.

See **Short Cycle Stud Welding – General Information** and **Technical Details** for industry specifications, thread options, Before Weld (BW) length, flux, raw material details, plating options, annealing, load strengths and shipping weights.



website www.sunbeltstudwelding.com email info@sunbeltstudwelding.com
 6381 Windfern Road, Houston, TX 77040 telephone 1.800.462.9353 - Houston 713.939.8903 fax 713.939.9013